

**Hewlett Packard
Enterprise**

inetum.

**Soaring high for 15 years
with the sovereign Inetum
Cloud!**

A practical implementation of a trustworthy & sovereign AI Platform

Stefan De Schuyter

April 2025

Artificial Intelligence you say...

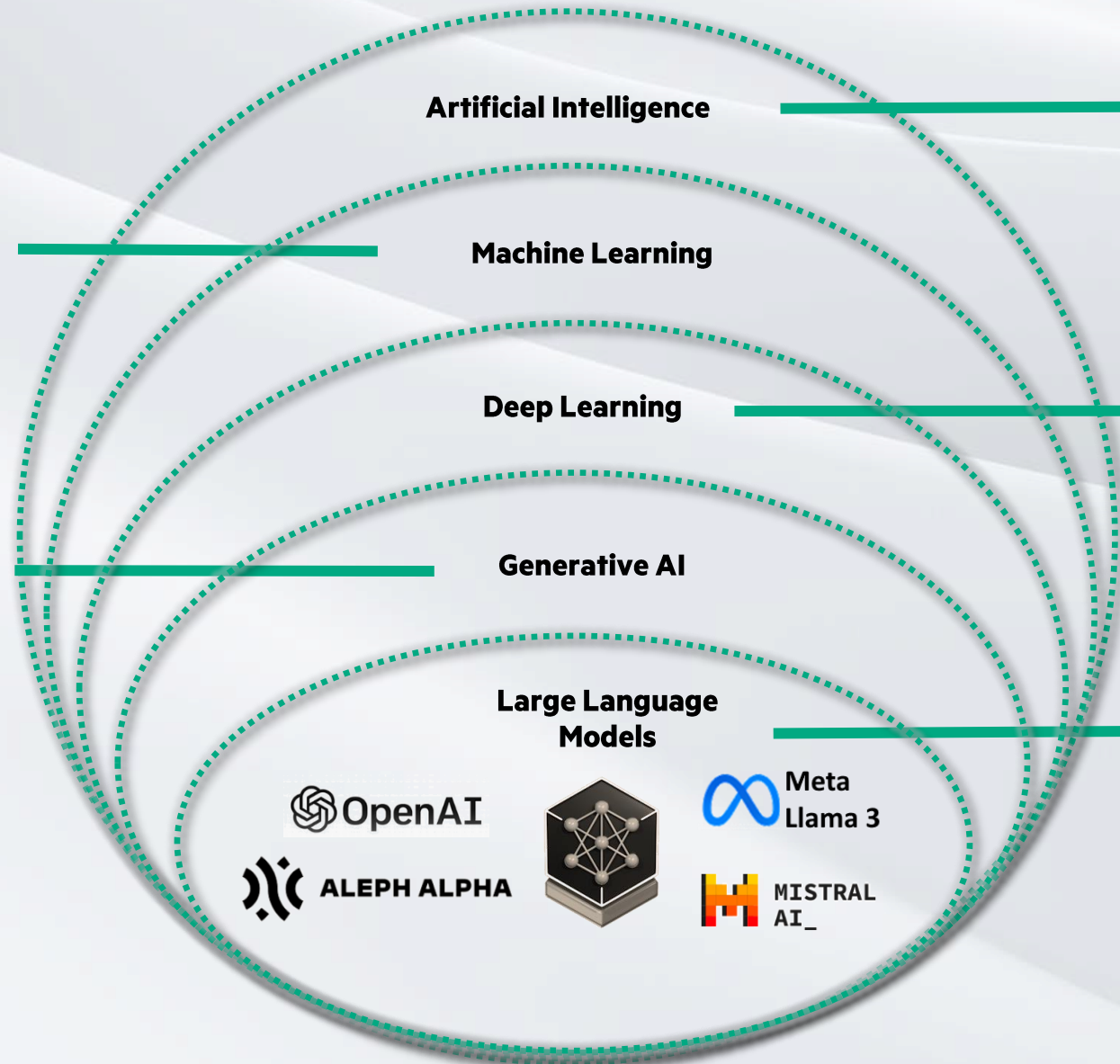
Algorithms that allow computers to learn from examples **without being explicitly programmed**

Uses **neural networks** to **generate new content** like text, images, sound, ...

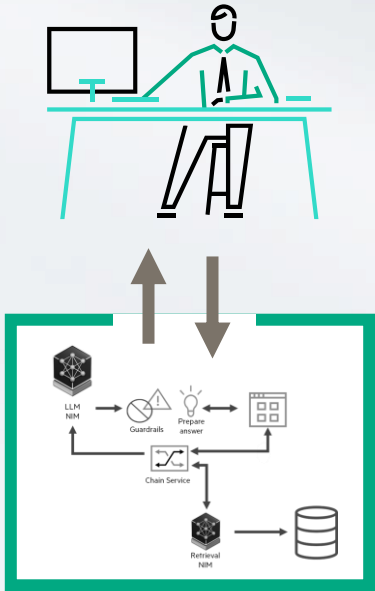
Any technique that enables machines **to solve a task** in a way **like humans** do

Uses **neural networks** as model that mimic the human brain **to detect & predict**

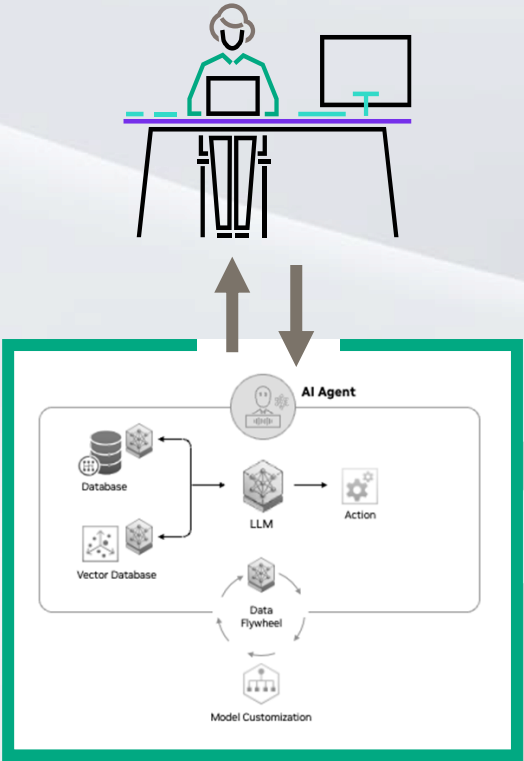
Uses neural networks to **generate content** in **context of** questions and **conversations**



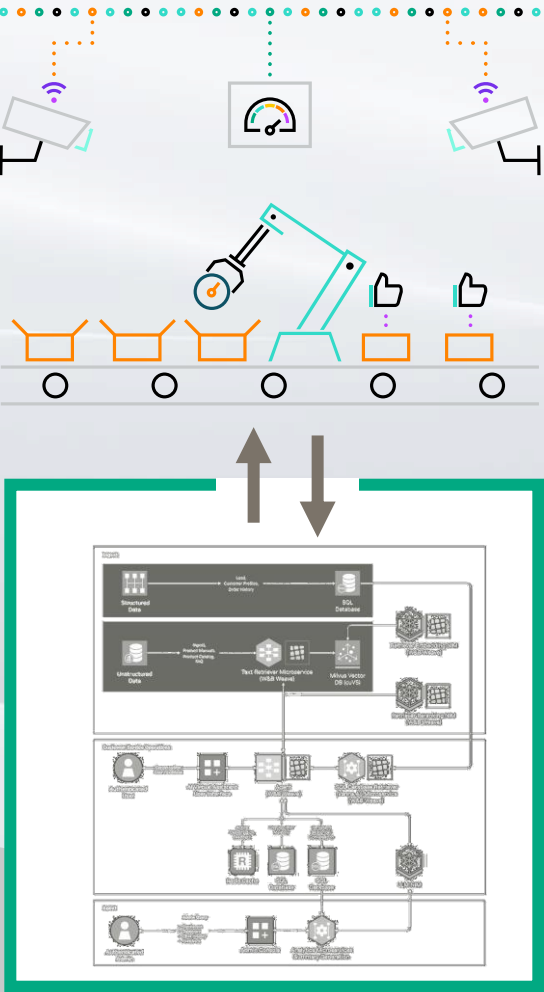
GenAI you say... What's next?



Generative AI



Agentic AI



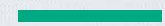
Physical AI

2025





**Hewlett Packard
Enterprise**



Ethical Principles of AI systems use

Privacy-Enabled

Human-Focused

Responsible

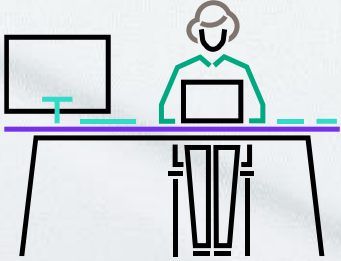
Inclusive

Secure

Robust

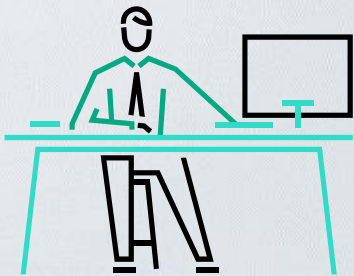


AI Advisory Board



AI Ethics Responsibility Committee

Responsible for ensuring ethical use, development and deployment of AI



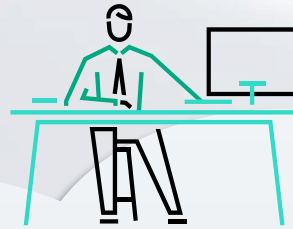
AI Ethics Working Group

Identifies & assesses ethical risk, and operationalizes reviews, guidance & solutions

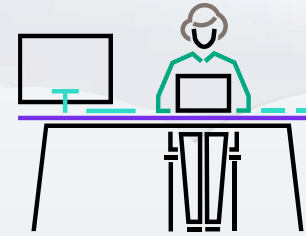


Driving success with GenAI

Supporting different personas



**Line
of Business**



Cloud experience

- Start small & scale effortlessly
- Extensibility designed in
- Self-Service capabilities
- Reduce complexity

Enterprise-grade control

- Company Confidential data stays private
- Models aligned with AI Ethics
- End-to-end manageability
- Hybrid by design

Secure access for all

- Applied security & governance
- Centralized management
- Optimize AI performance
- Robust & Scalable

Instant productivity

- Increase AI developer productivity
- Assure evergreen developer tools
- Deploy in minutes, not months
- Faster time to inference



AI Developers



IT Operations

Cloud Experience

Self-Service capabilities

Tools & Frameworks


NVIDIA AI Enterprise

Data Engineering

Analytics

Data Science

Gen AI Apps

**HPE Portfolio Assistant**


Version v1.4.2 | Ready

A helpful assistant that provides information on HPE's cloud modules.

Endpoint <https://hpe-portfolio-assistant.p006ua.tryezmeral.com>

Chart Version 1.4.2

[Open](#)

**Feast**


Version 0.34.1 | Ready

Feature Store for AI/ML

Endpoint <https://feast.p006ua.tryezmeral.com>

Chart Version 1.1.3

[Open](#)

**Kubeflow**


Version 1.8.0 | Ready

Notebooks, Model Training, Pipelines, and Model Serving toolset for Machine Learning

Endpoint <https://kubeflow.p006ua.tryezmeral.com>

Chart Version 1.0.31

[Open](#)

**Ray**


Version 2.7.0 | Ready

Unified framework for scaling AI and Python applications.

Endpoint <https://ray-dashboard.p006ua.tryezmeral.com>

Chart Version 0.5.0

[Open](#)

**HPE MLDE**


Version 0.26.7 | Ready

Deep-learning platform that simplifies distributed training, experiment tracking, and resource management

Endpoint <https://mlde.p006ua.tryezmeral.com>

Chart Version 0.26.701

[Open](#)

**MLflow**

Version 2.8.1 | Ready

MLflow is a platform to streamline machine learning development, including tracking experiments and ML lifecycle

Endpoint <https://mlflow.p006ua.tryezmeral.com>


Chart Version 0.7.29

[Open](#)

Applied security & governance

Selected Trustworthy LLMs


NVIDIA AI Enterprise | Data Engineering | Analytics | Data Science

**NVIDIA Retrieval QA Mistral 7...**
Version 7b-v2 | Configuring

NVIDIA NIM for GPU accelerated NVIDIA Retrieval QA Mistral 7B Embedding v2 Inference

question-answering | text-embedding | contextual-qa
knowledge-extraction | domain-specific-qa


[View Details](#)

**NVIDIA Retrieval QA E5 Embe...**
Version e5-v5 | Configuring

NVIDIA NIM for GPU accelerated NVIDIA Retrieval QA E5 Embedding v5 Inference

question-answering | text-embedding | contextual-qa
knowledge-extraction | domain-specific-qa


[View Details](#)

**Meta/Llama3-70b-instruct**
Version 3.0 | Configuring

NVIDIA NIM for GPU accelerated Llama 3 70B inference through OpenAI compatible APIs

natural-language-processing | language-understanding
question-answering | text-summarization


[View Details](#)

**Meta/Llama3-8b-instruct**
Version 3.0 | Configuring

NVIDIA NIM for GPU accelerated Llama 3 8B inference through OpenAI compatible APIs

text-generation | natural-language-processing | chatbot
conversational-ai | text-completion

[View Details](#)

**NVIDIA Retrieval QA Mistral 4...**
Version 4b-v3 | Configuring

NVIDIA NIM for GPU accelerated NVIDIA Retrieval QA Mistral 4B Reranking v3 Inference

text-embedding | information-retrieval | ranking-model
re-ranking | text-ranking

[View Details](#)

Use Case demonstration

Chat with your own data

Deployed Applications



Product QuickSpecs

● Ready

Chat with the most recent product technical specifications. (Updated Weekly)

Endpoint <https://mistral-7B-esua-pcai.hpe.com:7088>

chat language generation large language models +2

Open Playground



RFP materials

● Ready

Chat with relevant RFP documents which contain domain specific information. (monthly)

Endpoint <https://llama-3-1-B-esua-pcai.hpe.com:7089>

chat language generation large language models +2

Open Playground

Meta/Llama3-8b-instruct



Associated Products

NVIDIA AI Enterprise Essentials

NVIDIA Microservices

Feature

NVIDIA AI Enterprise Supported

Description

NVIDIA NIM for GPU accelerated Llama 3 8B inference through OpenAI compatible APIs

Publisher

NVIDIA AI Enterprise

Version

3.0-hpe4

Modified

July 23, 2024

Size

8.49 GB

Model URI

pvc://models-pvc

Container Image

10.6.127.47/ezmeral-common/nvc.r.io/nim/meta/llama3-8b-instruct:1.0.3

text-generation natural-language-processing

chatbot conversational-ai text-completion

NVIDIA Retrieval QA Mistral 7B Embedding v2



Associated Products

NVIDIA AI Enterprise Essentials

NVIDIA Developer Program

Feature

NVIDIA NIM, Signed Images

Description

NVIDIA NIM for GPU accelerated NVIDIA Retrieval QA Mistral 7B Embedding v2 inference

Publisher

NVIDIA AI Enterprise

Version

7b-v2-hpe3

Modified

July 26, 2024

Size

7.98 GB

Model URI

pvc://models-pvc

Container Image

10.6.127.47/ezmeral-common/nvc.r.io/nim/nvidia/nv-embedqa-mistral-7b-v2:1.0.1

question-answering text-embedding

contextual-qa knowledge-extraction

Use Case demonstration

Chat with your own data

Tools & Frameworks


Import Framework

NVIDIA AI Enterprise

Data Engineering


Analytics


Data Science

**Airflow**
Version 2.9.2 | Ready

Workflow engine for scheduled batch ingestion of data from a wide variety of external data sources

Endpoint <https://airflow.hpepci-ingress.pcai.hpecic.n...>
Chart Version 1.3.3


Open 

**EzPresto**
Version prestodb:0.287-1.5.2 | Ready

Distributed query engine designed for analytic queries on data of any size


Endpoint <https://ezpresto.hpepci-ingress.pcai.hpecic...>
Chart Version 1.5.2


Open

**Open WebUI**
Version 0.3.32 | Ready

web interface for LLM development work

Endpoint <https://open-webui.hpepci-ingress.pcai.hp...>
Chart Version 3.3.99

Open 

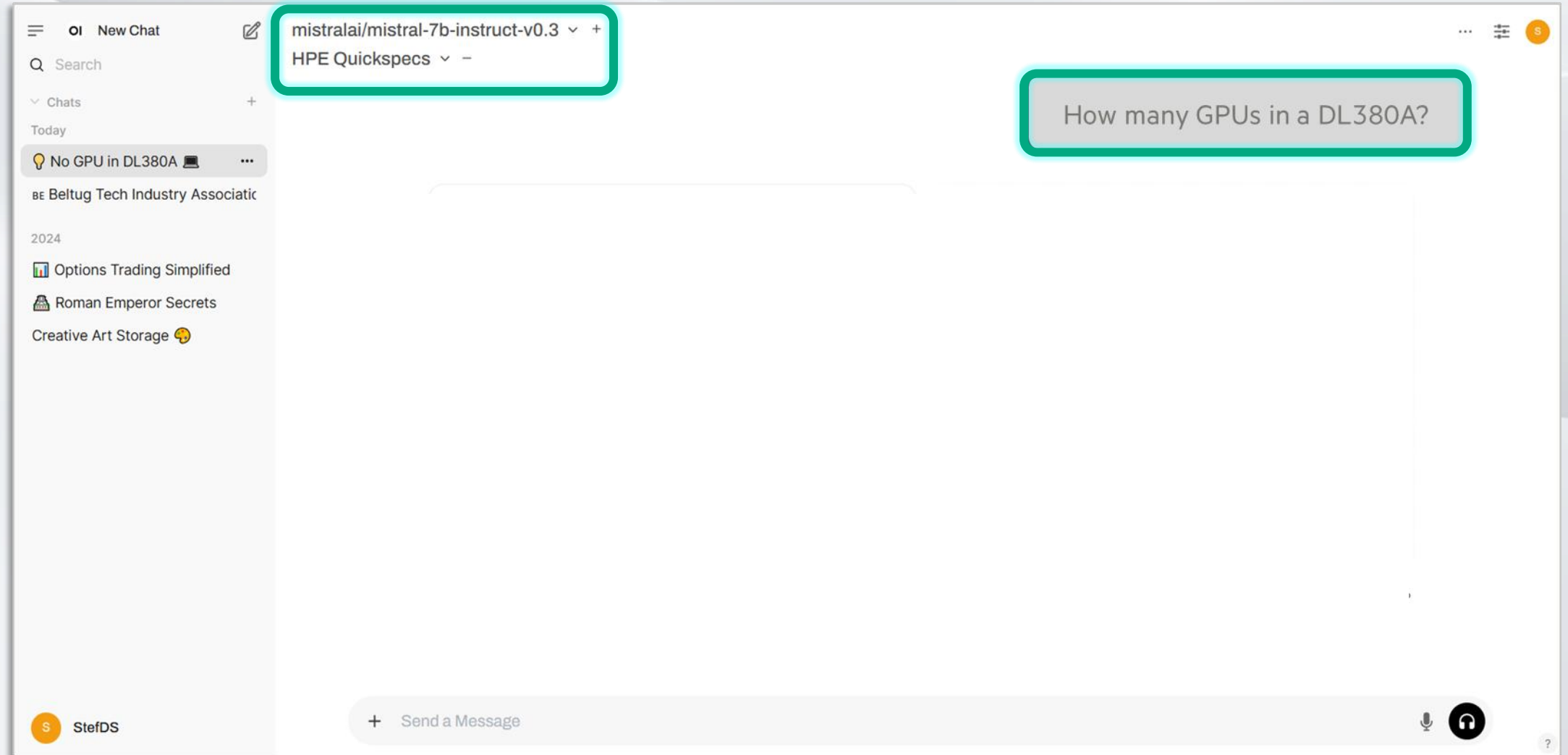
**Superset**
Version 4.0.1 | Ready

Apache Superset is a modern, enterprise-ready business intelligence web application

Endpoint <https://superset.hpepci-ingress.pcai.hpecic...>
Chart Version 0.11.215

Use Case demonstration

Chat with your technical documentation



To conclude

Some interesting resources

HPE AI Ethics and Principles

[View the blog post →](#)

[Chat with an AI specialist →](#)



AI for Good

Advancing the Way People Live and Work

Ethical AI Across Industries

Applying AI with Ethical Confidence Across Industries

AI technologies are quickly reshaping the way many organizations and industries produce and analyze data. At HPE, we are developing Trustworthy AI where accuracy, equity, sustainability, privacy, compliance, and confidence are engineered from edge to cloud. See how our AI technology creates efficiencies and improves overall output.

[Explore AI across Industries →](#)

Learn More About Trustworthy AI

Discover why this is AI you can trust.

[Explore the Infographic →](#)

To conclude

Some interesting resources

AI Community

- AI ethics: the moral & ethical implications of using artificial intelligence
- Optimized RAG pipeline for large-scale ingestion and retrieval

Developer Community

- Blogs: Getting started with Retrieval Augmented Generation (RAG)
- Workshops on-demand: Machine Learning 101 - Introduction to ML concepts

hpe.com/ai

stef@hpe.com





**Hewlett Packard
Enterprise**

inetum.

**Soaring high for 15 years
with the sovereign Inetum
Cloud!**

A practical implementation of a trustworthy & sovereign AI Platform

stef@hpe.com

April 2025