

**inetum.**

# HPE ON TOUR 2025 Sunset sessions



  
Hewlett Packard  
Enterprise

| **intel**®



**HPE**   
**ON TOUR 2025**

**inetum.** 

# **HPE on Tour 2025 - Inetum**

**Manu Van de Vliet**

Sr Business Unit Lead, Infrastructure Value Add Resell



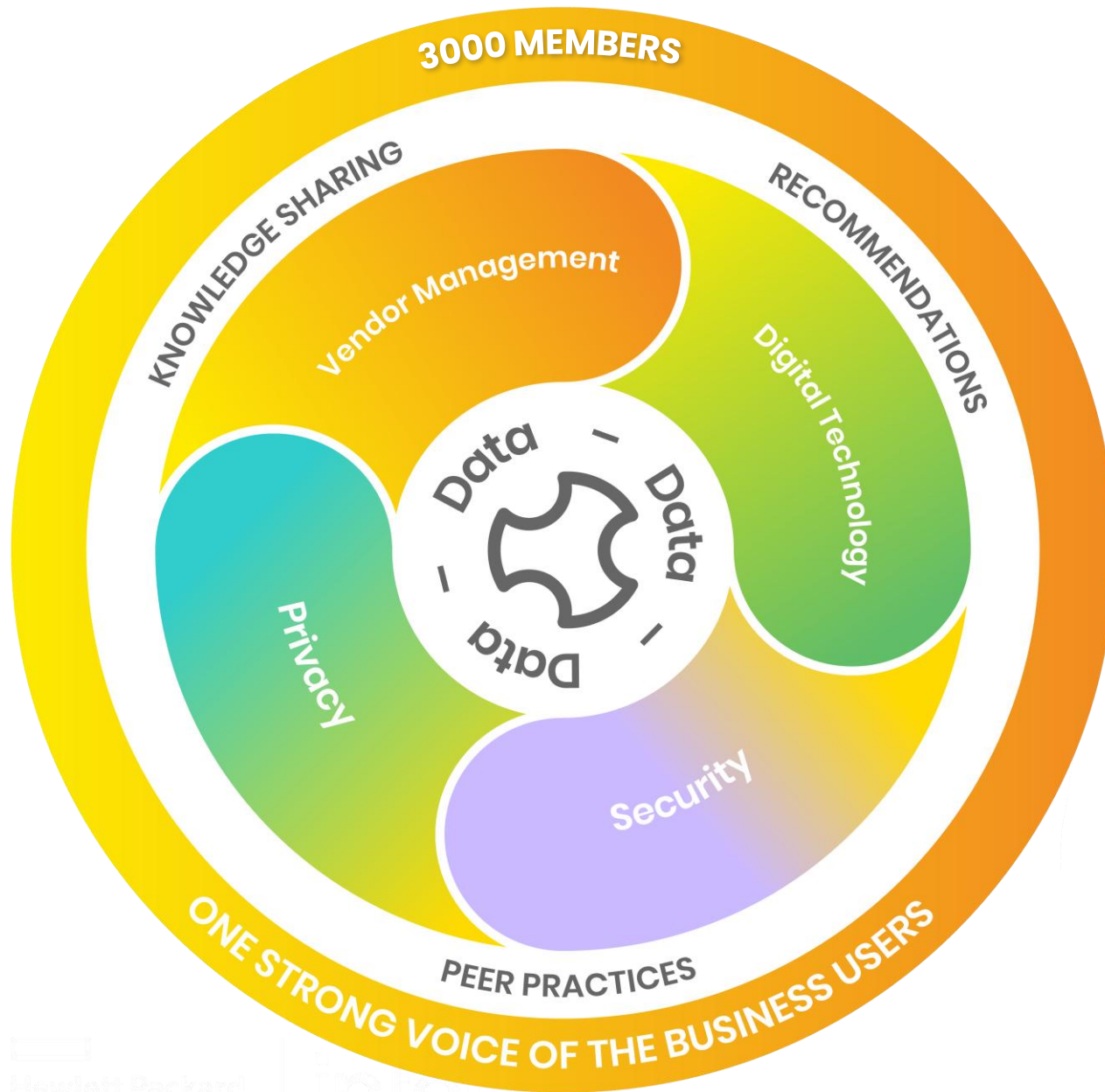


**HPE**   
**ON TOUR 2025**

# **HPE on Tour 2025 – Inetum**

HPE BeLux

September 11, 2025



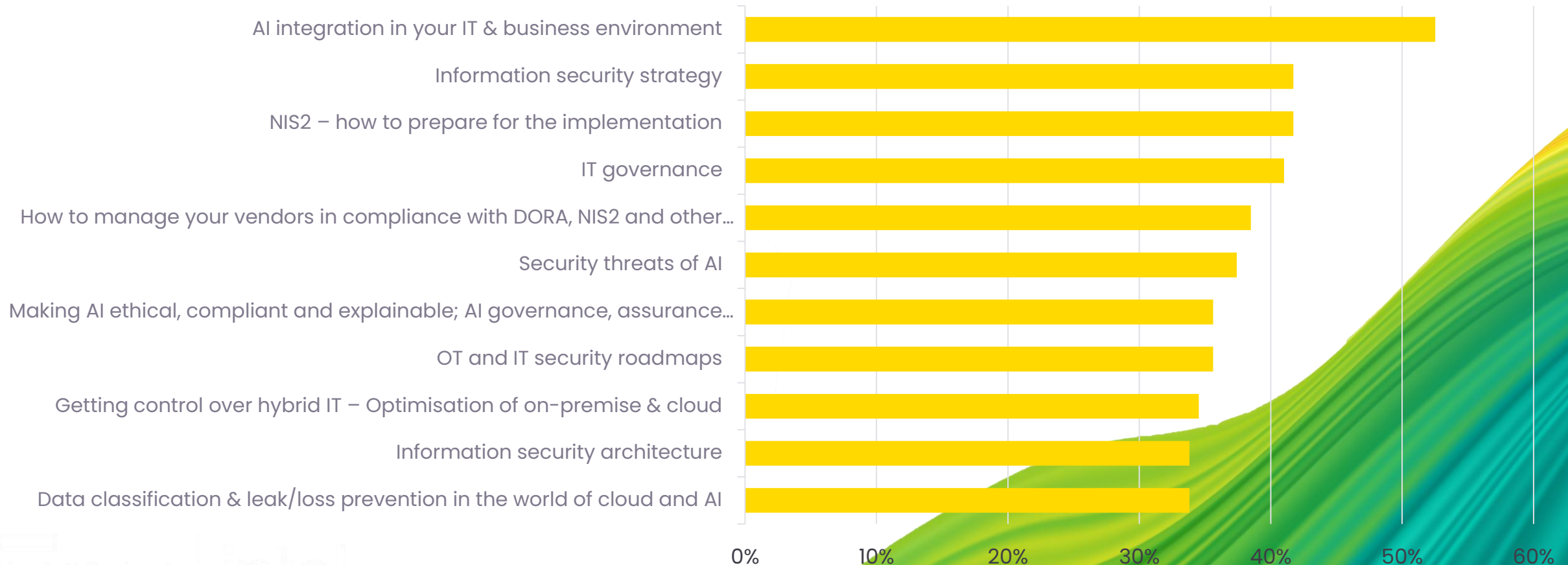
## The Association of CIOs and Digital Technology Leaders

 **Beltug**





# Top-10 Priorities of the Belgian CIOs & digital technology leaders



# Biggest challenge of IT: **Overwhelming Complexity**

“We as IT always need to do more with less;

More infrastructure, more tools, more platforms and clouds. All this while getting less skilled people and being pressured by budget constraints. Yet still we are required to innovate faster and cope with totally new fields like Artificial Intelligence.”



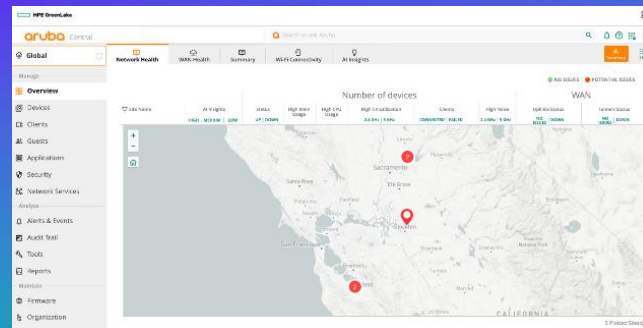


Biggest challenge of IT:  
**Overwhelming  
Complexity**

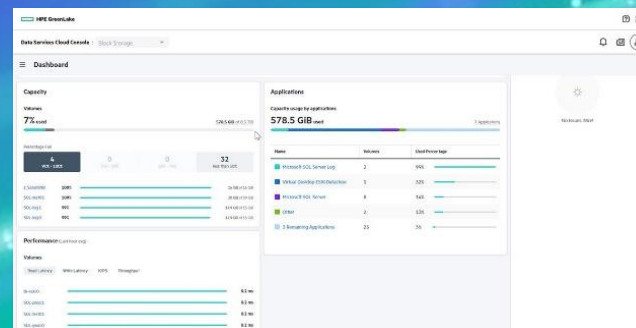
HPE's Mission:  
**Make IT  
Easy**



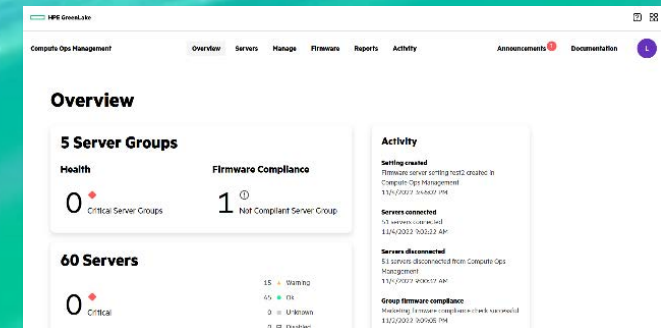
# Making IT easy is at the core of HPE's solutions today



**Network Management**



**Storage Management**



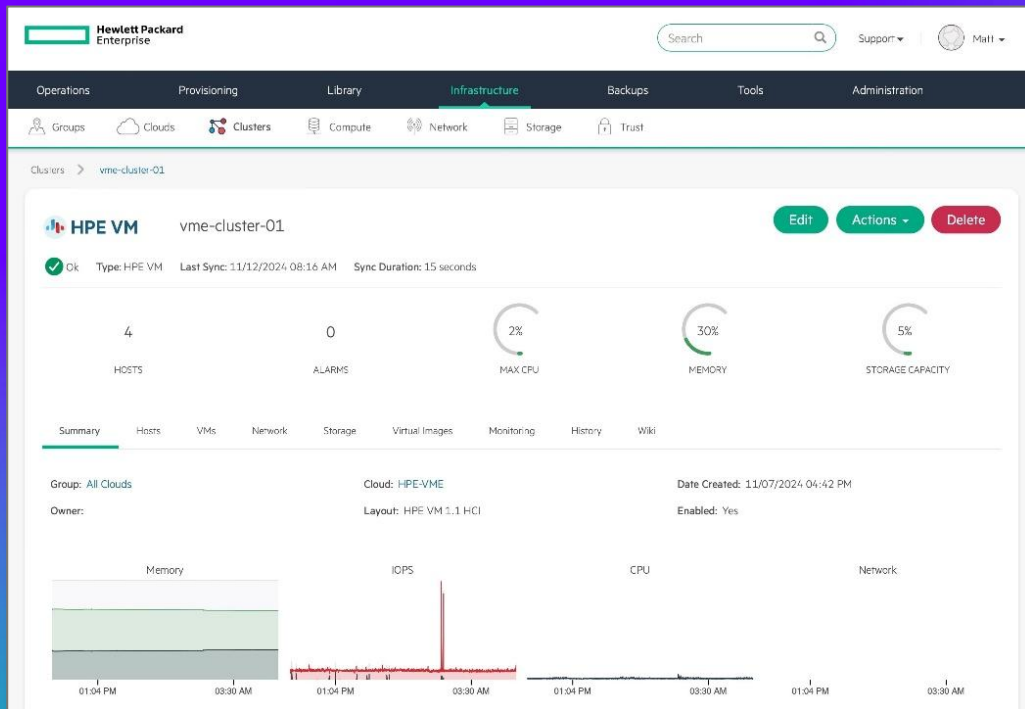
**Compute Management**

# We know how to build platforms; **Let's go beyond infrastructure Management**





# HPE Morpheus VM Essentials Software



1. **Reduce costs** with HPE VM Essentials integrated hypervisor
2. **Simplify management** across VMware and HPE
3. **Lower risk** with enterprise-grade support & partner ecosystem
4. **Future-proof IT** with flexible consumption & upgrade paths

But it is not just a  
**Hypervisor discussion; it's a broader discussion**



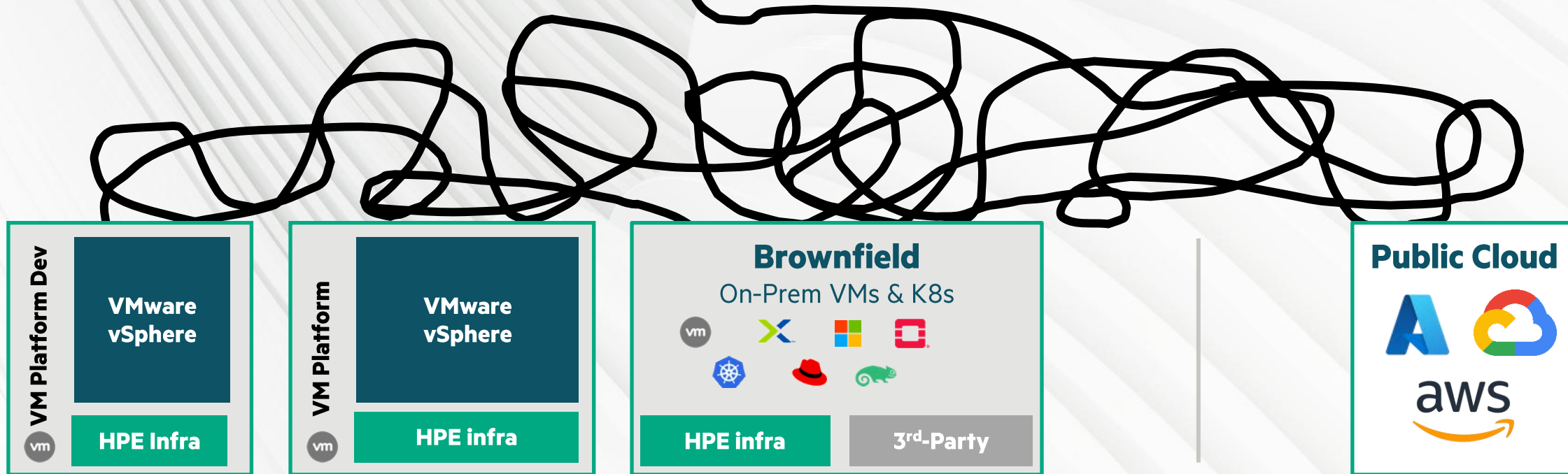
Hewlett Packard  
Enterprise

intel®



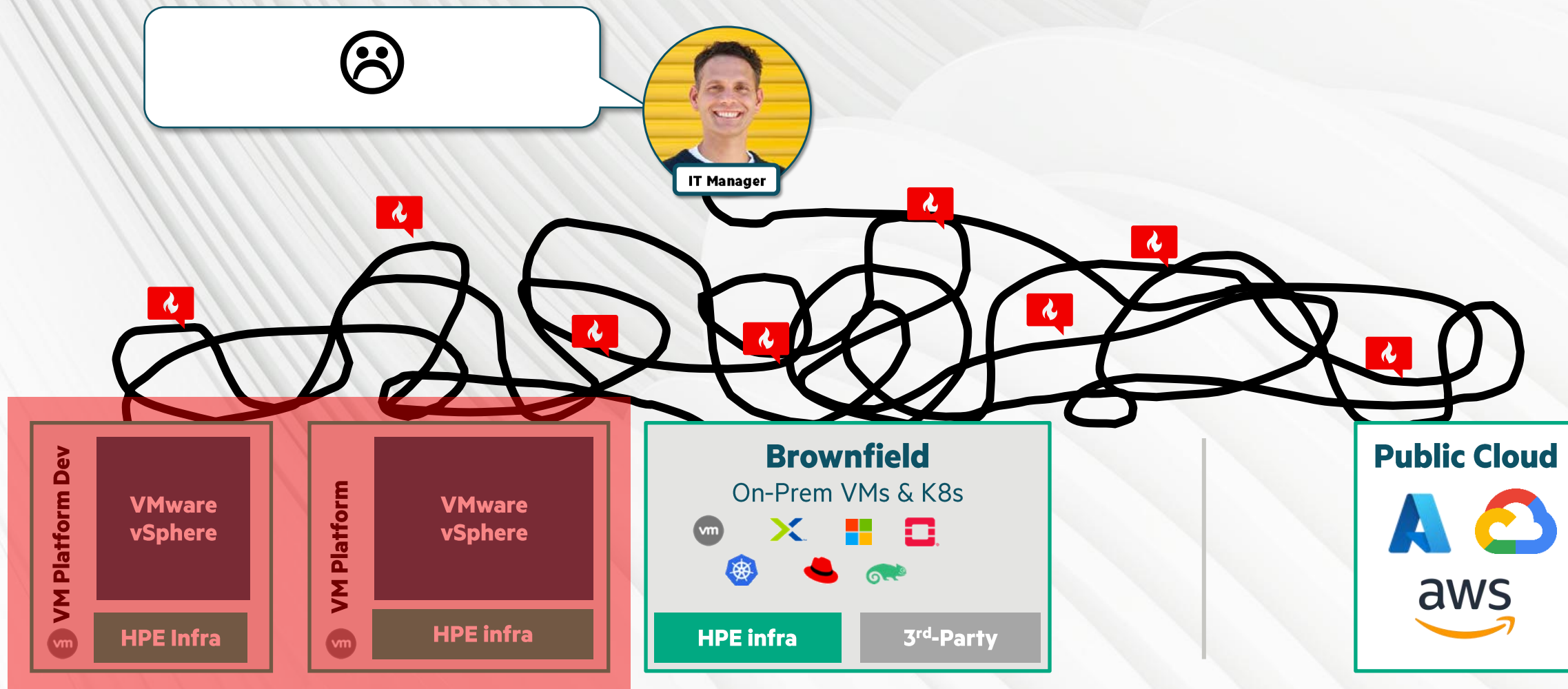
Your IT needs a new approach:  
**Platform-centric**

„A method to the madness“



Larger IT → more siloed environments → more complexity → more chaos





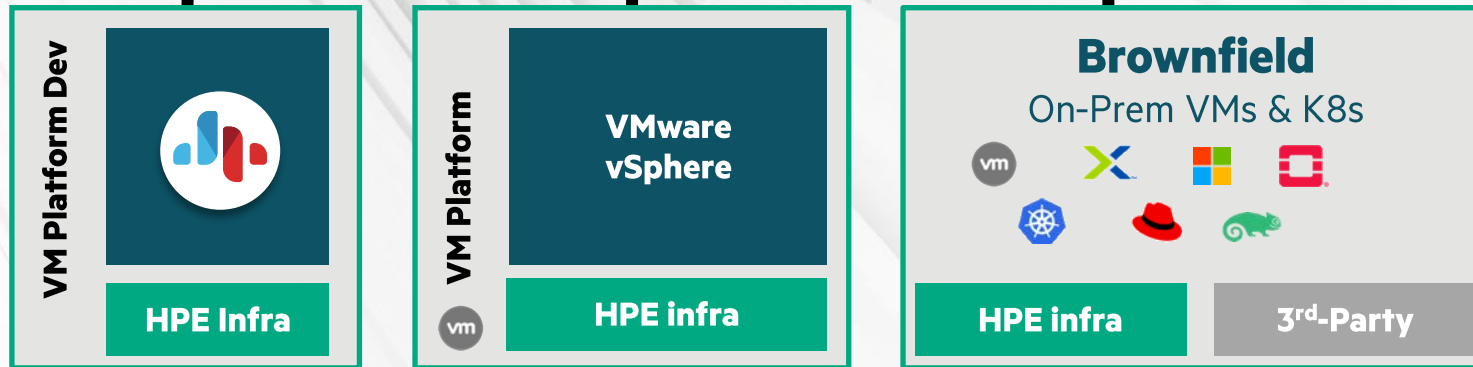
Larger IT → more siloed environments → more complexity → more chaos

**My IT processes stay  
untouched!**

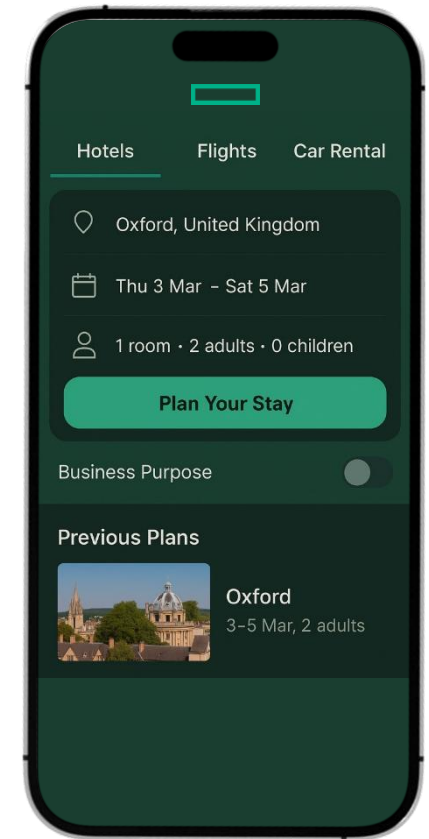


**Platform centric approach – IT processes become independent from the**

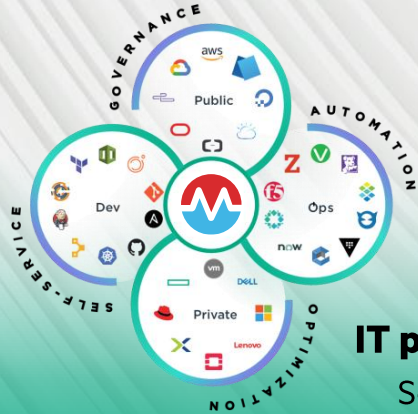
Self-Service Provisioning | Governance Policy | Cost Reporting & Chargeback



## The Booking Platform for your IT

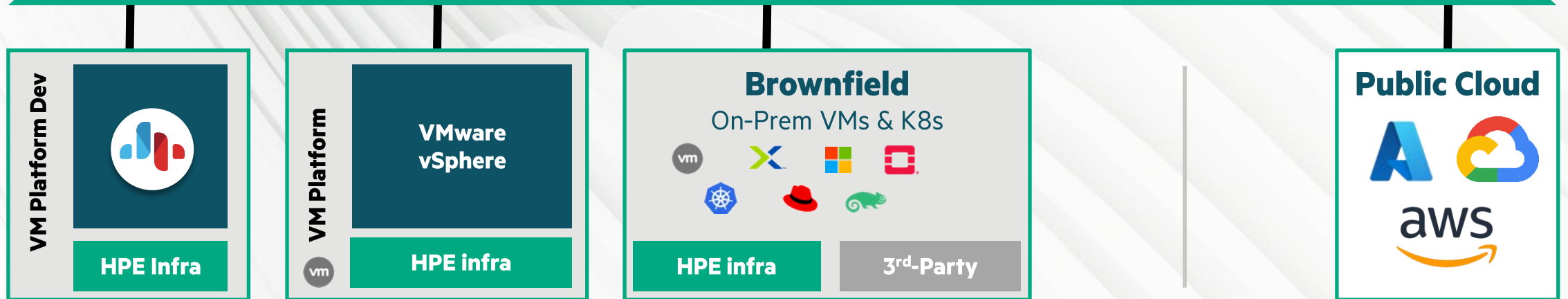






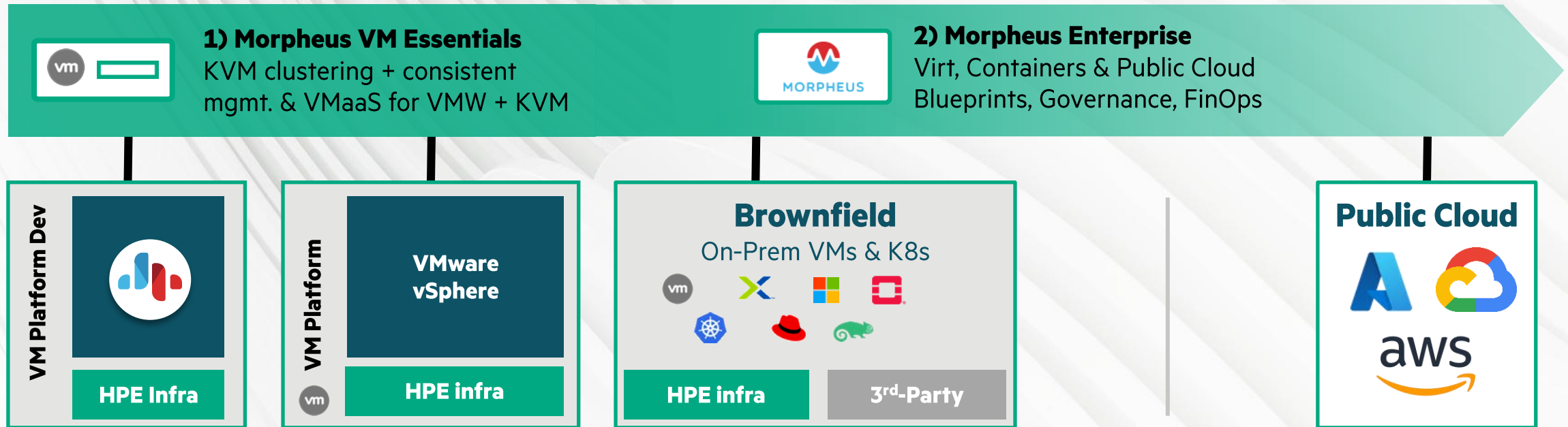
# Morpheus

**IT processes become independent from the underlying infrastructure**  
Self-Service Provisioning | Governance Policy | Cost Reporting & Optimization



1) Primarily for customers mainly concerned with VM-management, searching to optimize hypervisor cost.

2) Primarily for customers who have complex, heterogenous environments and search for an all-in-one orchestration platform with a self-service experience.



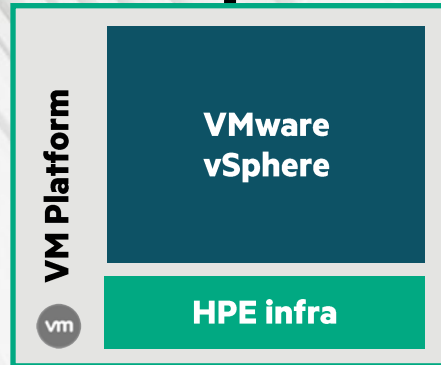
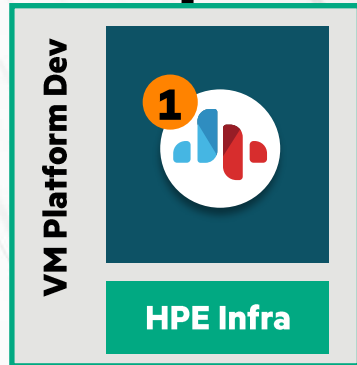


# My Booking Platform for VMs

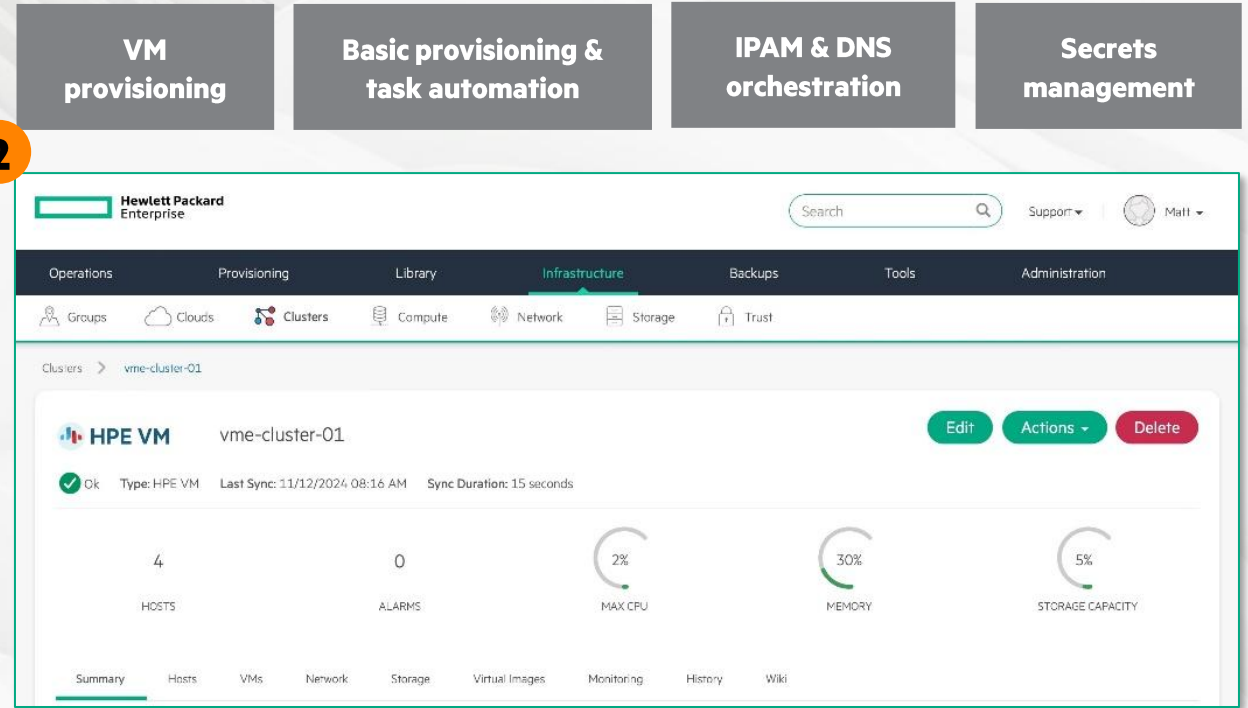


2

**1) Morpheus VM Essentials**  
KVM clustering + consistent mgmt. & VMaaS for VMW + KVM



2



1

**HPE VM Essentials  
KVM hypervisor**

**VMware vSphere**

# Demo Time





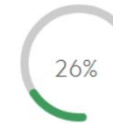
Instance Count



Instance Status



MAX CPU



STORAGE



MEMORY

## INSTANCES

[All Groups](#)[All Clouds](#)[All Statuses](#)[+ Add](#)[Actions](#)☐

NAME

SUMMARY

LOCATION

STATS

☐

CIC\_Demo



IP addr: 10.6.123.50  
IP addr: 10.6.123.52  
Version: 1.0  
Virtual Machines: 2

Group: allclouds  
Cluster: CIC VME Cluster



STATUS



MAX CPU



MEMORY



STORAGE

☐

Davedemo



IP addr: 10.6.123.56  
Version: 1.0  
Virtual Machines: 1

Group: allclouds  
Cluster: CIC VME Cluster



STATUS



MAX CPU



MEMORY



STORAGE

☐

DB-Bell



IP addr: 10.6.123.51  
Version: 1.0  
Virtual Machines: 1

Group: allclouds  
Cluster: CIC VME Cluster



STATUS



MAX CPU



MEMORY



STORAGE

☐

DEMO\_ELKO\_VME

Dev



IP addr: 10.6.122.58  
Version: 1.0  
Virtual Machines: 1

Group: allclouds  
Cluster: CIC VME Cluster



STATUS



MAX CPU



MEMORY



STORAGE

☐

DEMO-ELKO-vmware

Dev



IP addr: 10.4.27.231  
Version: 1.0  
Virtual Machines: 1

Group: allclouds  
Clouds: CIC VMware Cloud  
Region:



STATUS



MAX CPU



MEMORY



STORAGE

☐

DemoVMMax3

Dev

IP addr: 10.6.122.56  
Version: 1.0

Group: allclouds  
Cluster: CIC VME Cluster



STATUS



MAX CPU



MEMORY



STORAGE

## CREATE INSTANCE



Type



Group



Configure



Automation



Review



Technology ▾



HPE VM

High-performance virtual machine optimized for Morpheus MVM hypervisor, offering seamless deployment and management in on-premises environments.



VMWARE

Spin up any VM Image on your VMware based infrastructure.



Previous

Next

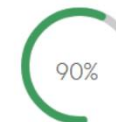




Instance Count



Instance Status



MAX CPU



STORAGE



MEMORY

- Groups
- Clouds
- Clusters
- Compute
- Network
- Storage
- Trust

## INSTANCES

[All Groups](#)[All Clouds](#)[All Statuses](#)[+ Add](#)[Actions](#)☐ NAME☐ SUMMARY

LOCATION

STATS

☐ CIC\_Demo

IP addr: 10.6.123.50  
IP addr: 10.6.123.52  
Version: 1.0  
Virtual Machines: 2

Group: allclouds  
Cluster: CIC VME Cluster



STATUS



MAX CPU



MEMORY



STORAGE

☐ Davedemo

IP addr: 10.6.123.56  
Version: 1.0  
Virtual Machines: 1

Group: allclouds  
Cluster: CIC VME Cluster



STATUS



MAX CPU



MEMORY



STORAGE

☐ DB-Bell

IP addr: 10.6.123.51  
Version: 1.0  
Virtual Machines: 1

Group: allclouds  
Cluster: CIC VME Cluster



STATUS



MAX CPU



MEMORY



STORAGE

☐ DEMO\_ELKO\_VME

Dev



IP addr: 10.6.122.58  
Version: 1.0  
Virtual Machines: 1

Group: allclouds  
Cluster: CIC VME Cluster



STATUS



MAX CPU



MEMORY



STORAGE

☐ DEMO-ELKO-vmware

Dev



IP addr: 10.4.27.231  
Version: 1.0  
Virtual Machines: 1

Group: allclouds  
Clouds: CIC VMware Cloud  
Region:



STATUS



MAX CPU



MEMORY



STORAGE

☐ DemoVMMax3

Dev

IP addr: 10.6.122.56  
Version: 1.0

Group: allclouds  
Cluster: CIC VME Cluster



STATUS



MAX CPU



MEMORY



STORAGE



Instance Count



Instance Status



MAX CPU



STORAGE



MEMORY

## INSTANCES

[All Groups](#)[All Clouds](#)[All Statuses](#)[+ Add](#)[Actions](#)☐ NAME☐ SUMMARY

LOCATION

STATS

☐ CIC\_Demo

IP addr: 10.6.123.50  
IP addr: 10.6.123.52  
Version: 1.0  
Virtual Machines: 2

Group: allclouds  
Cluster: CIC VME Cluster



STATUS



MAX CPU



MEMORY



STORAGE

☐ Davedemo

IP addr: 10.6.123.56  
Version: 1.0  
Virtual Machines: 1

Group: allclouds  
Cluster: CIC VME Cluster



STATUS



MAX CPU



MEMORY



STORAGE

☐ DB-Bell

IP addr: 10.6.123.51  
Version: 1.0  
Virtual Machines: 1

Group: allclouds  
Cluster: CIC VME Cluster



STATUS



MAX CPU



MEMORY



STORAGE

☐ DEMO\_ELKO\_VME

Dev



IP addr: 10.6.122.58  
Version: 1.0  
Virtual Machines: 1

Group: allclouds  
Cluster: CIC VME Cluster



STATUS



MAX CPU



MEMORY



STORAGE

☐ DEMO-ELKO-vmware

Dev



IP addr: 10.4.27.231  
Version: 1.0  
Virtual Machines: 1

Group: allclouds  
Clouds: CIC VMware Cloud  
Region:



STATUS



MAX CPU



MEMORY



STORAGE

☐ DemoVMMax3

Dev

IP addr: 10.6.122.56  
Version: 1.0

Group: allclouds  
Cluster: CIC VME Cluster



STATUS



MAX CPU



MEMORY



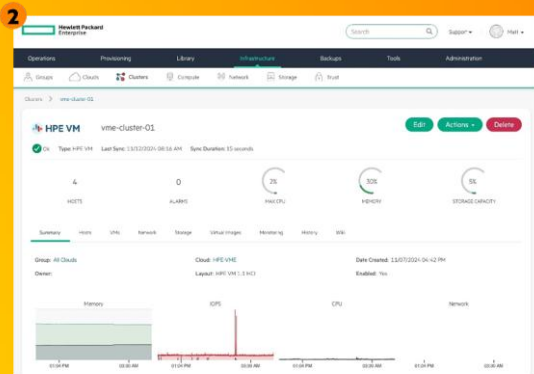
STORAGE

# Licensing & Positioning



# How to consume Morpheus VM Essentials

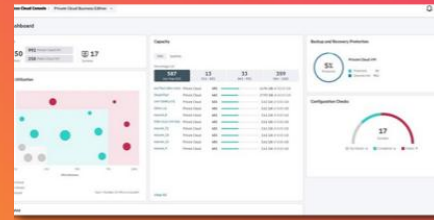
## 1.) HPE VM Essentials Standalone



HPE VM Essentials  
hypervisor

VMware vSphere

## 2.) ..as part of Private Cloud Business Edition (PCBE) *available in H2*



All-in-one HCI for  
Edge scenarios

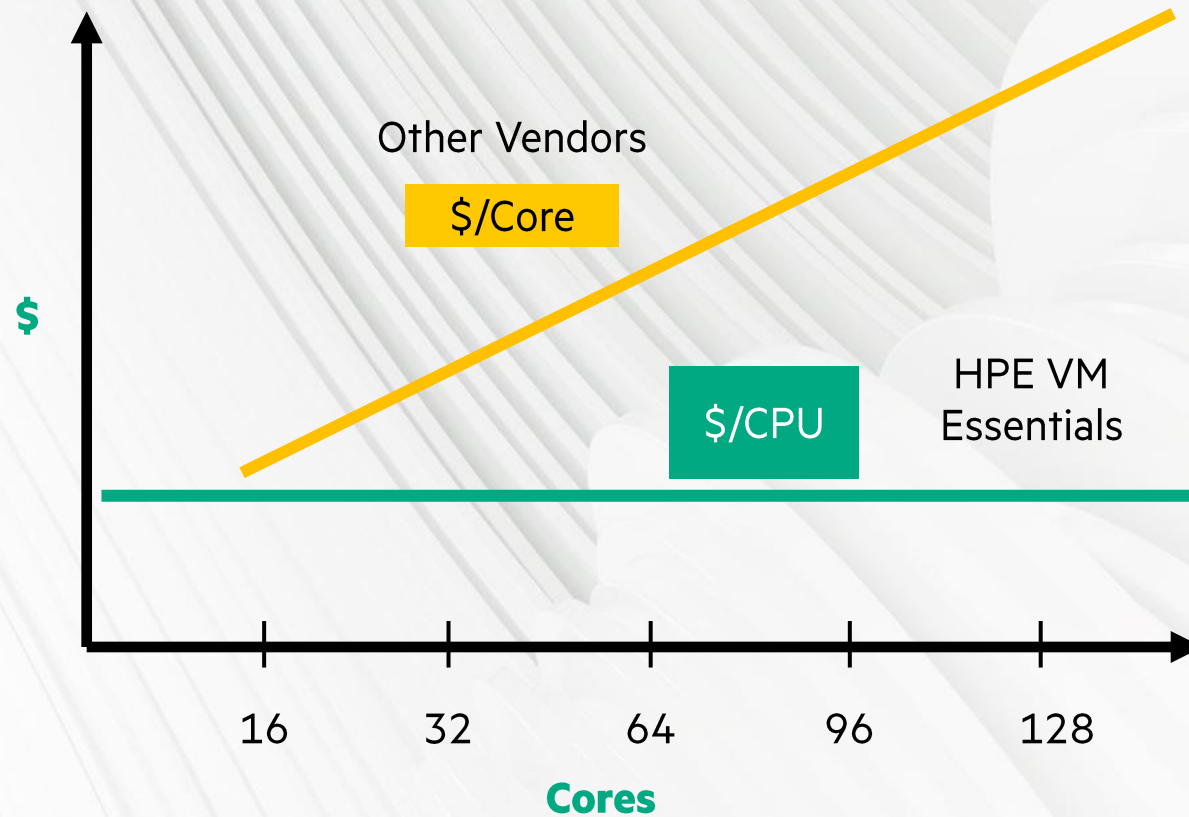


Disaggregated HCI  
for central Private Clouds

## 3.) ..as part of Morpheus Ent.



# HPE VM Essentials licensing is CPU Socket based



Intel Xeon 6517P (16 Cores)

or

Intel Xeon 6730P (32 Cores)

or

Intel Xeon 6767P (64 Cores)

or

Intel Xeon 6787P (86 Cores)

1 Year = €500

3 Years = €1500

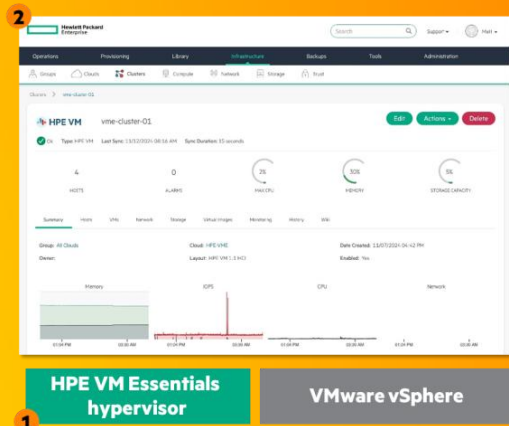
5 Years = €2500

# Your next steps if you look for...

## 1. Completely replacing small VMware environments

### Trial today

Download the 60-Days Trial today and **evaluate your migration path** with your trusted partner



## 2. More balanced approach for your VM-estate

### ..Trial today

Download the 60-Days Trial today and evaluate which **workloads you can already shift** away from VMware to **optimize licensing** cost, without feeling rushed

### 2.1 Optimize Hypervisor-cost

### CloudPhysics assessment

Let your trusted partner do a CloudPhysics assessment to **right-size your current environment** and **assess savings** for VM Essentials

## 3. A platform-centric approach for your entire IT

### Morpheus Enterprise

Contact HPE's Hybrid Cloud experts for a Deep-Dive of the Morpheus Enterprise platform.





The foundation of a **robust and efficient**  
virtual environment is the  
**underlying server infrastructure**

# HPE ProLiant Compute Gen12

engineered for your hybrid world



## Secured

Next-level security

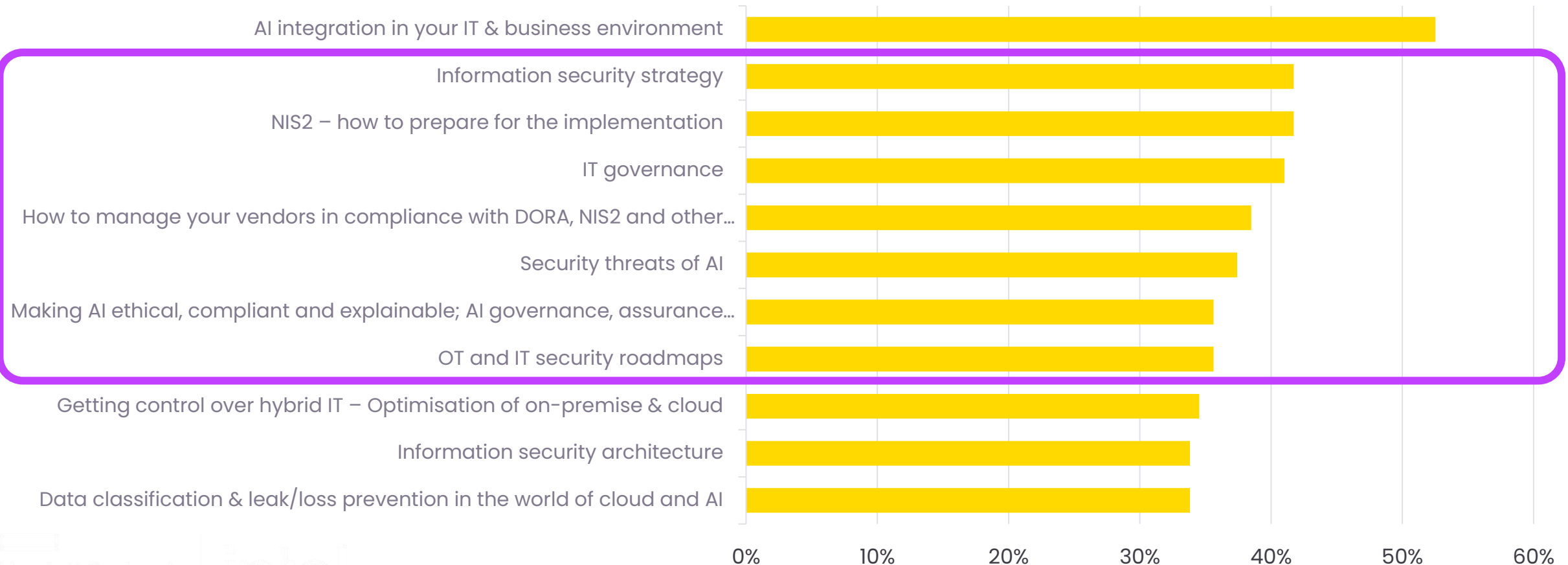
## Optimized

More performance  
and efficiency

## Automated

AI-driven  
productivity

# Top-10 Priorities of the Belgian CIOs & digital technology leaders





# Next-level security

**Multi-layered protection**

**Meets FIPS 140-3 Level 3 requirements**

**Quantum resistant support**

**Trusted supply chain at rack level**

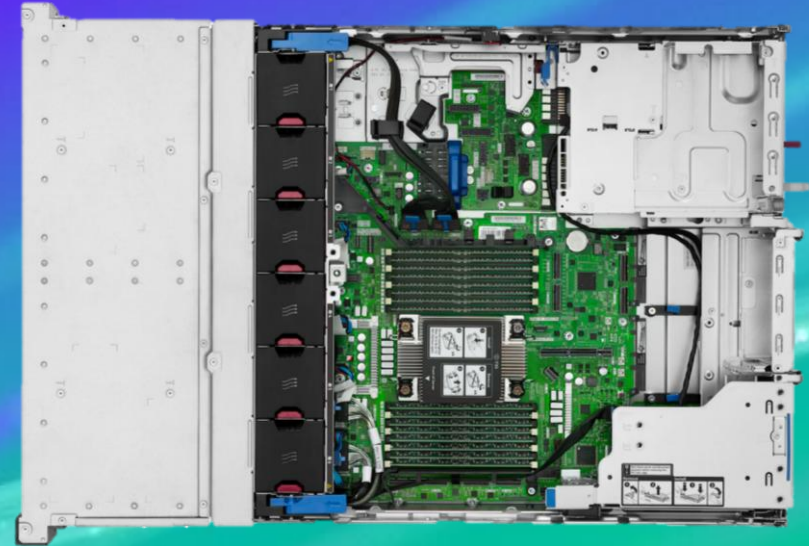


# New HPE iLO 7 delivers additional layer of protection

## HPE builds on industry-leading security innovation

**NEW!**

**Secure enclave** is an **independent security processor** for multi-layered protection with new hardware-based vault within **HPE iLO 7**



**Unparalleled, tamper-resistant protection** for keys, passwords and security configuration, especially important to fortify vulnerable edge environments



# Be ready for future security standards, now

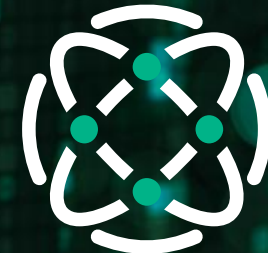
**NEW!**

**First\* industry standard servers to get FIPS 140-3 Level 3** certified, attained through the HPE iLO 7 with secure enclave, meeting extremely high U.S. and Canadian government security standards



**NEW!**

**First server\* to support NIST and CNSA 2.0 quantum resistance requirement** with secure firmware signing against future quantum computing attacks



\*As of January 27<sup>th</sup>, 2025



# Enhanced security at every level

## HPE Compute Ops Management

Automated, AI-drive productivity



## HPE ProLiant Compute Gen12

Top-tier security certification with first industry standard servers

Secure against future quantum computer threats – industry first

independent security processor within HPE iLO 7 – tamper resistant protection

Boot with an immutable (unchangeable) source in silicon

Starts at the factory

Centralized, cloud experience to automate lifecycle tasks

Proactive Security Management

**NEW!**

FIPS 140-3 Level 3 certification

**NEW!**

Quantum resistant

**NEW!**

Secure Enclave

**NEW!**

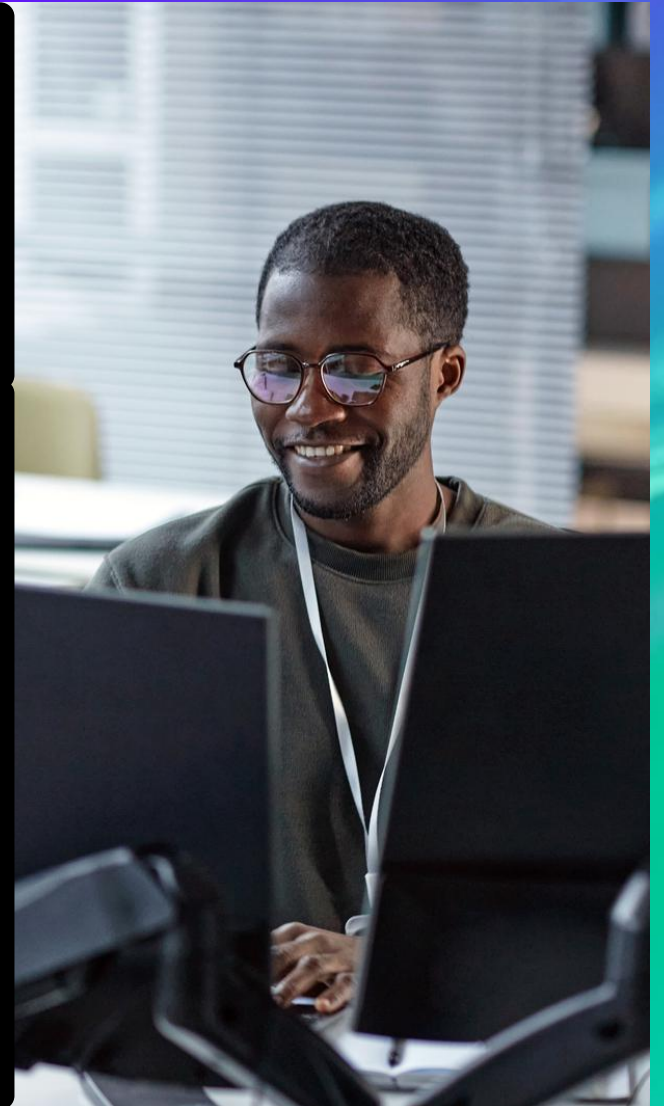
Enhanced Silicon Root of Trust

Trusted Supply Chain

**NEW!**

**HPE iLO 7**

**NEW!**



# Automated & AI-driven productivity

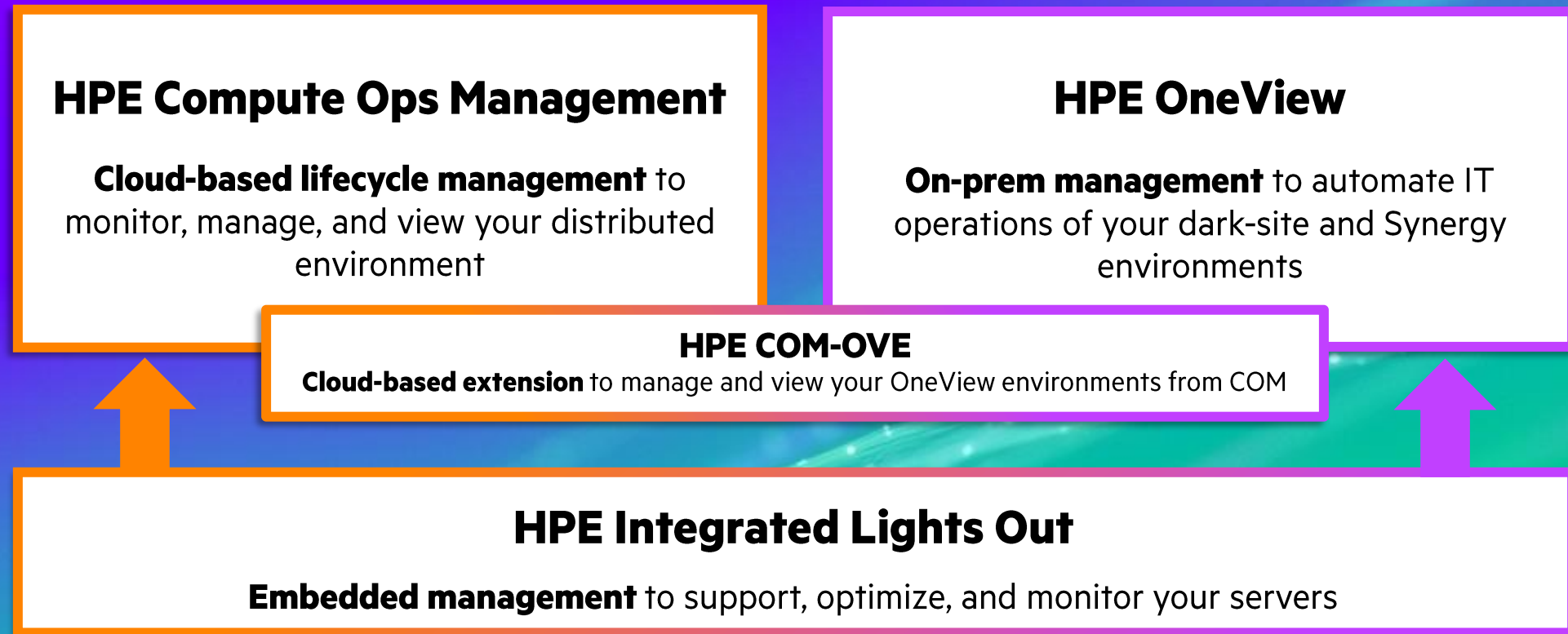
**Predictive AI insights**

**Energy and carbon intelligence**

**Improved map-based visibility**



# HPE Compute Management portfolio





# HPE Compute Ops Management

- **Do more**

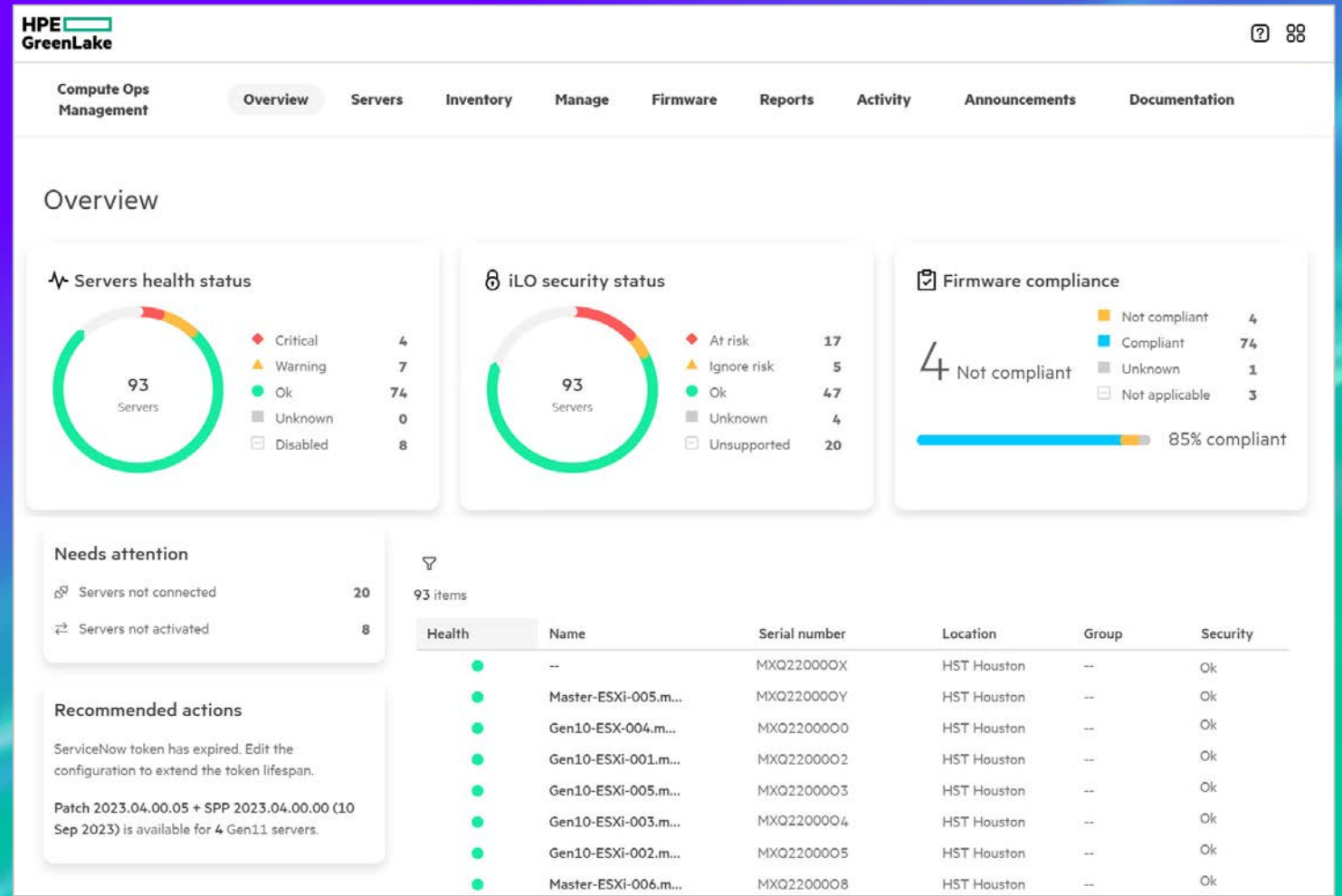
Deploy & manage with ease—  
automated operations replace  
manual tasks

- **Move faster**

Get your evenings & weekends  
back with efficient server updates

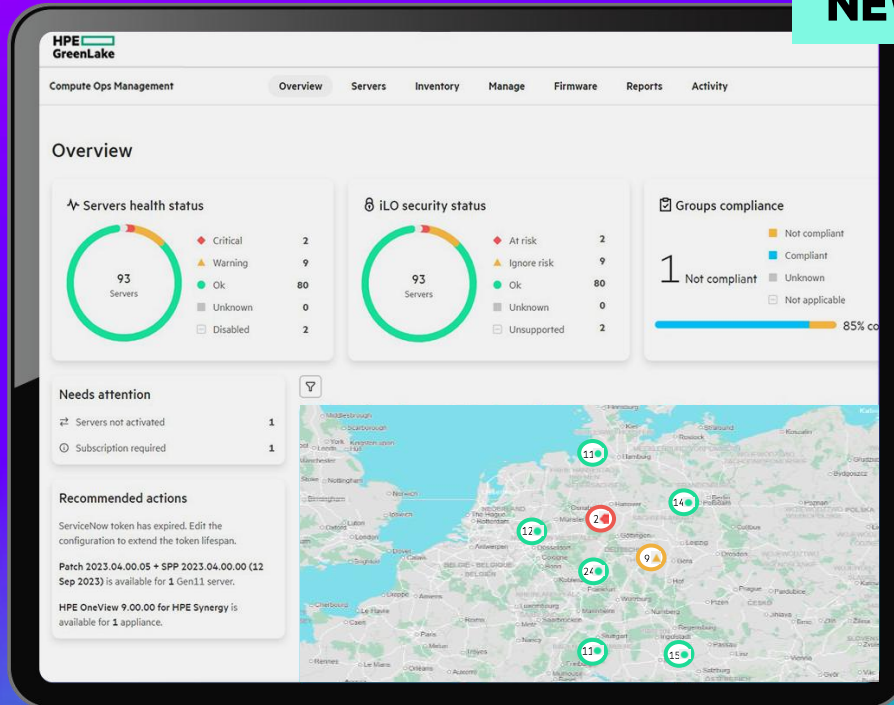
- **Set & protect**

Reduce risk with faster,  
continuous patching, policies,  
and secure connections



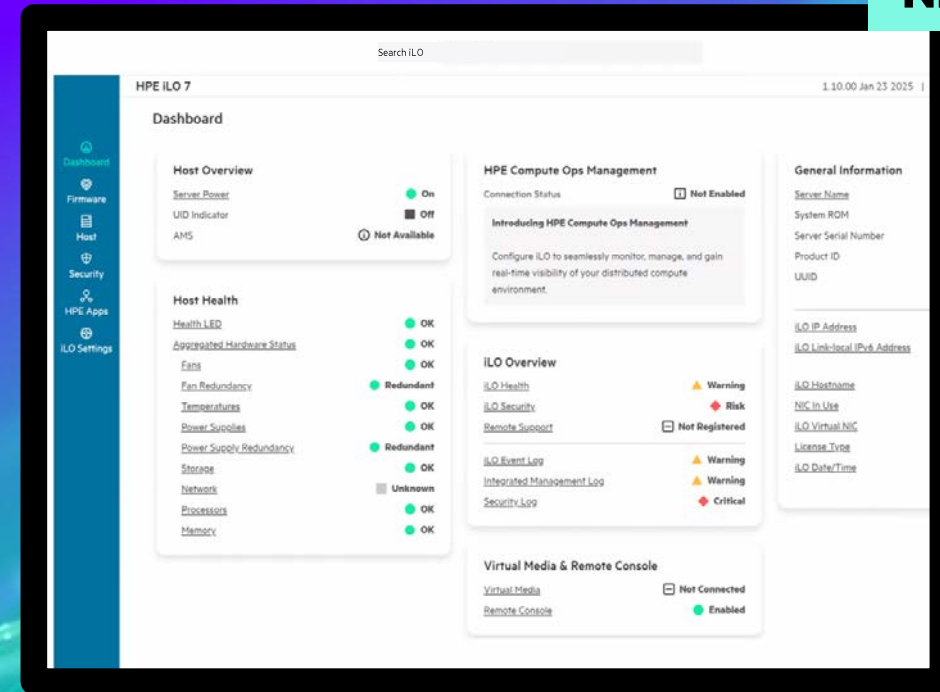
# Enabling operators with greater intelligence & control

NEW!



Improved map-based visibility  
with **HPE Compute Ops Management**

NEW!



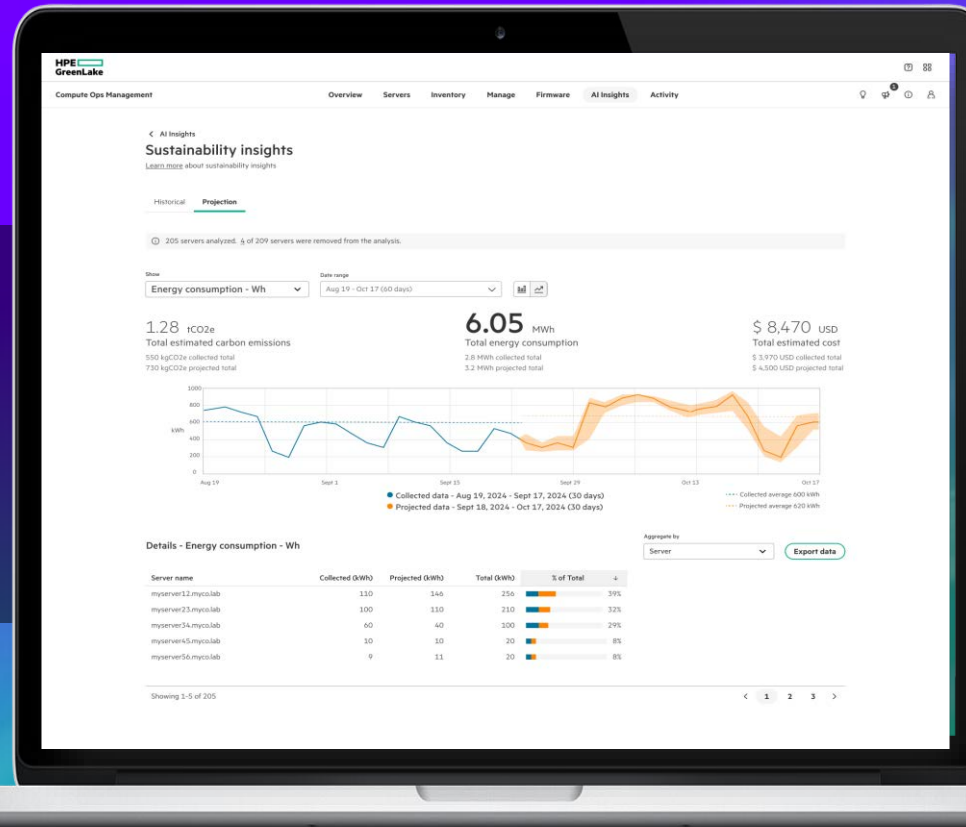
Faster, smoother user experience  
with new **HPE iLO 7**  
Up to 30% decreased system boot up time and  
3x faster virtual media operations for enhanced usability\*

\* Internal HPE Testing as January 27<sup>th</sup>, 2025 comparing HPE iLO 7 versus HPE iLO 6.

# Predictive AI insights for energy and carbon emissions

**NEW!**

Leverage **predictive AI insights** to forecast future energy costs and carbon emissions with confidence.



Historical data is analyzed to provide predictions on server utilization, to help **achieve energy and emissions goals**

**HPE Compute Ops Management**



# More performance and efficiency

**Consolidate and save**

**AI-optimized server platforms**

**Superior cooling efficiency**



# HPE ProLiant Compute & Intel® Xeon® 6 Processors

## Workload Optimized Processors

### Eagle Stream



4<sup>th</sup> Gen Xeon CPUs  
(Sapphire Rapids)



5<sup>th</sup> Gen Xeon CPUs  
(Emerald Rapids)

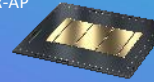
**HPE Gen11**



### Intel Xeon 6 CPUs

Xeon 6 with P-cores  
(Granite Rapids)

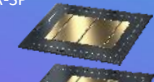
GNR-AP



For HPC, Host-CPU  
12 mem channels  
72 to 128 cores

6900P Series

GNR-SP



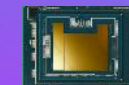
Mainstream EMR Successor  
Flexible for Cloud/Enterprise WLS  
Rich IS for Storage  
8 to 86 Cores

6700P Series

6500P Series

Xeon 6 with E-cores  
(Sierra Forest)

SRF-SP

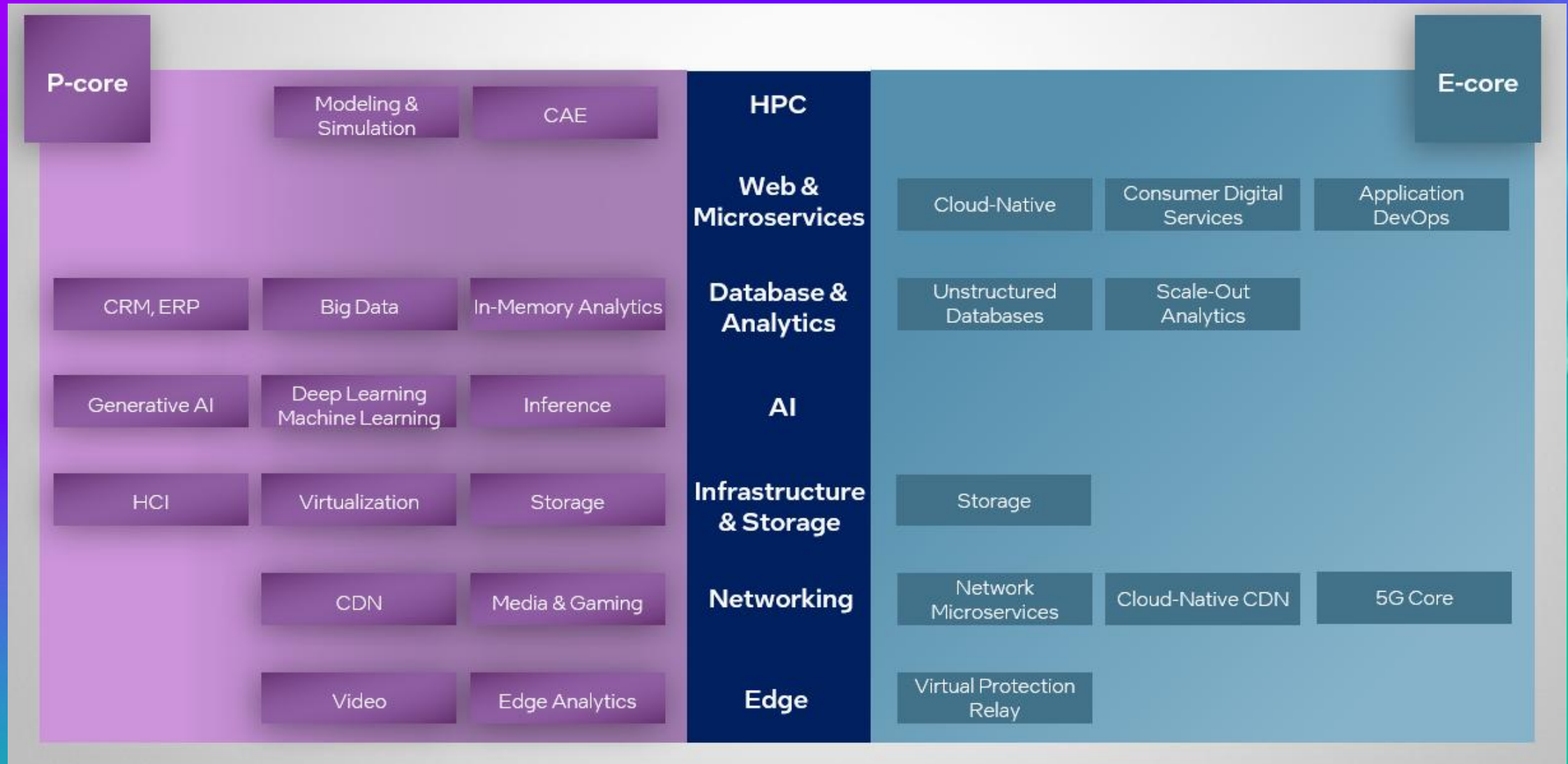


Perf/W, High Density  
Up to 144

6700E Series

**HPE Gen12**

# Intel's® Workload to Processor Alignment





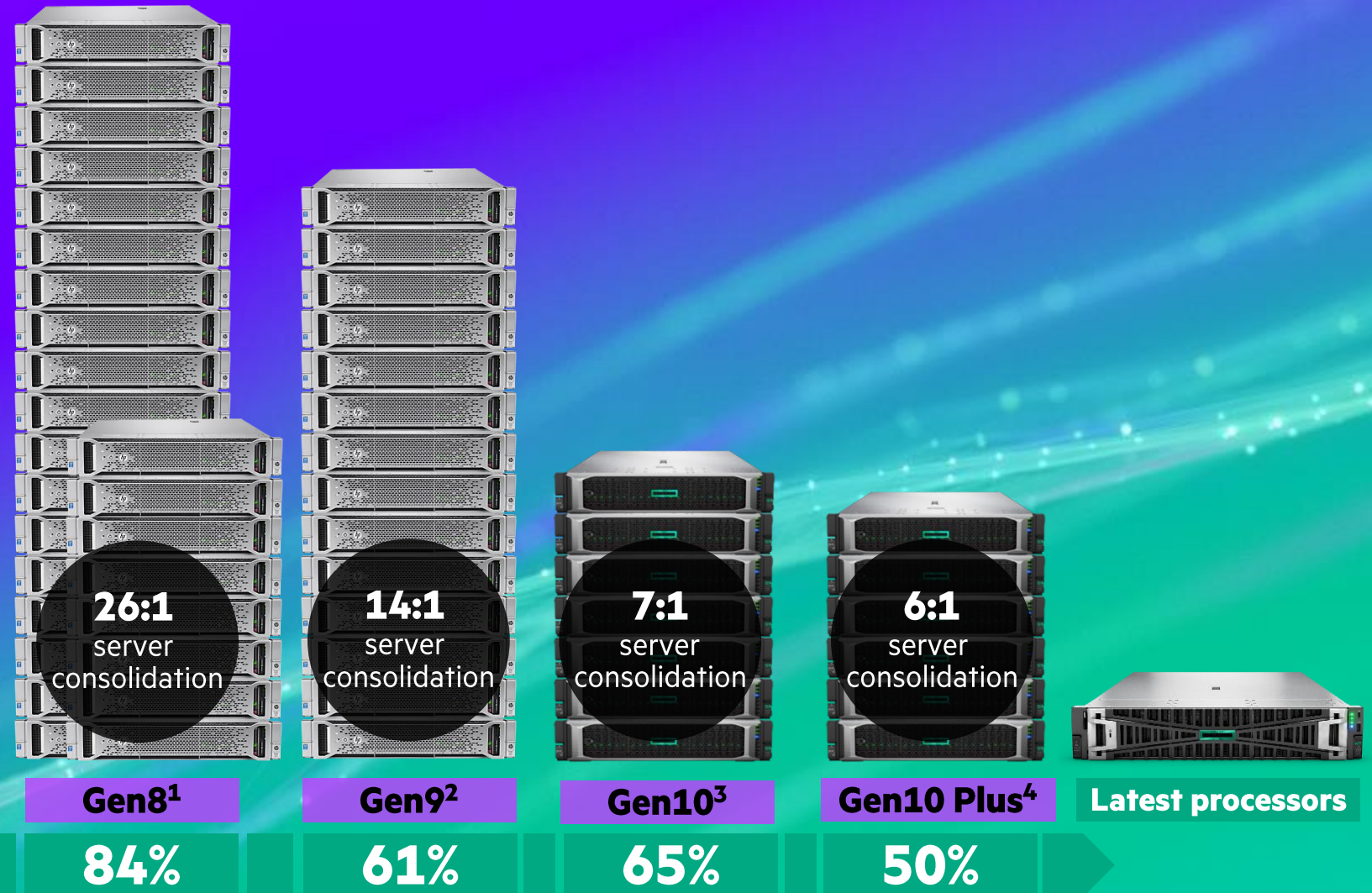
# The most compelling case for server refresh yet

**41% higher performance per watt** versus Gen10<sup>6</sup>

**Free up data center capacity** with up to 26:1 consolidation<sup>2</sup>

**Reduce energy consumption** and achieve up to 84% power savings<sup>1</sup>

**Mitigating risk and technical debt** from dated operating system and software



# HPE ProLiant Compute Gen12 portfolio

Available now

## AI optimized



**4U, 2P**  
**HPE ProLiant Compute DL380a Gen12**  
Intel Xeon 6 processor  
Up to Eight NVIDIA H200 NVL



**2U, 2P**  
**HPE ProLiant Compute DL384 Gen12**  
NVIDIA GH200 NVL2

## TCO/Power optimized



**1U, 1P**  
**HPE ProLiant Compute DL320 Gen12**  
Intel Xeon 6 processor



**2U, 1P**  
**HPE ProLiant Compute DL340 Gen12**  
Intel Xeon 6 processor

## Density optimized



**1U, 2P**  
**HPE ProLiant Compute DL360 Gen12**  
Intel Xeon 6 processor



**2U, 2P**  
**HPE ProLiant Compute DL380 Gen12**  
Intel Xeon 6 processor

Available Summer 2025

## Big Data optimized



**4U, 4P**  
**HPE ProLiant Compute DL580 Gen12**  
Intel Xeon 6 processor

## SMB/Edge optimized



**2P Tower**  
**HPE ProLiant Compute ML350 Gen12**  
Intel Xeon 6 processor

## Blade optimized



**HPE Synergy 480 Gen12**  
Intel Xeon 6 processor

## AMD DL325 & DL345 Gen12





# The Symbiotic Relationship



# A unified portfolio built on HPE Alletra Storage MP

**Mission critical storage  
for structured workloads**



**Block**

**High performance  
for machine data**



**File**

**Accelerated data access  
for unstructured and AI workloads**



**Object**

**HPE Alletra Storage MP**

**One** architecture, **One** operating model

# HPE Alletra Storage MP B10000

Industry's **first** disaggregated,  
scale-out block and file unified storage



**Block**



**File**



## **Superior flexibility and economics**

with unified multi-protocol  
disaggregated scale-out storage

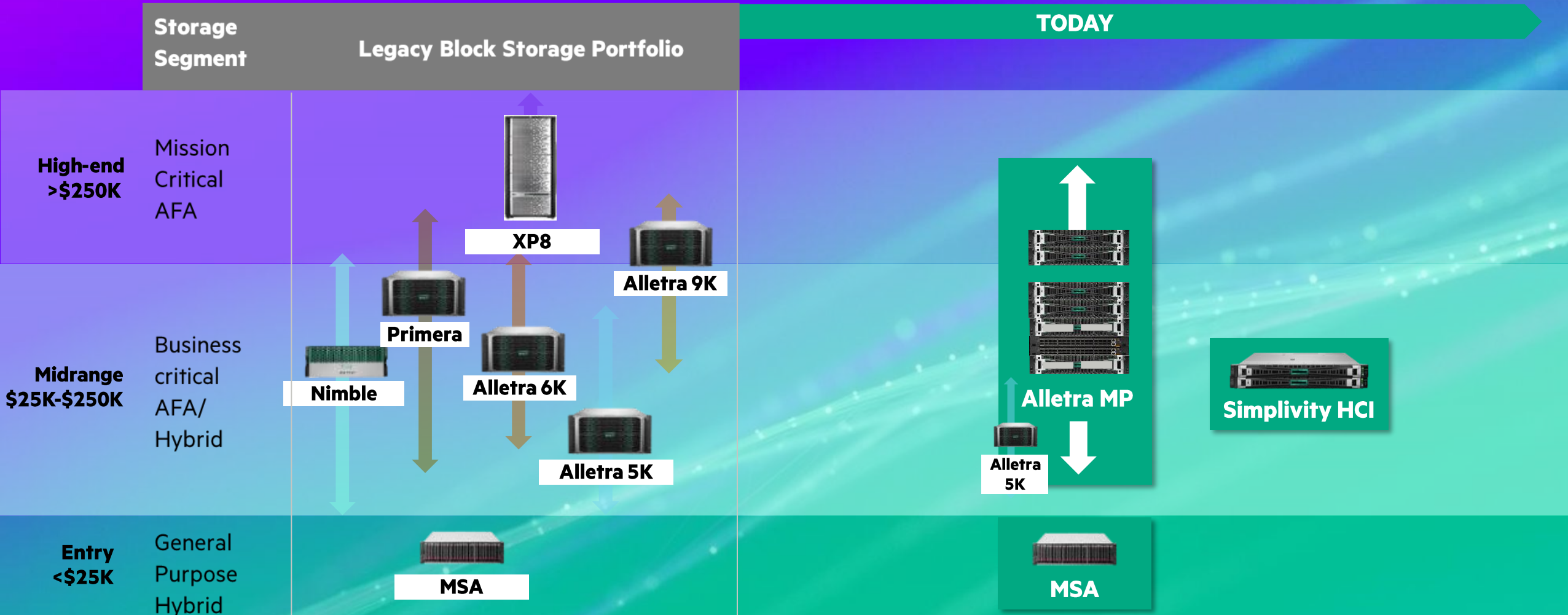
## **Simplified Management**

with a cloud operational experience

## **Ultimate peace of mind**

from downtime and threats through  
multi-layer ransomware protection and  
guaranteed 100% data availability.

# HPE Storage Portfolio - Journey to ONE





# Presentation

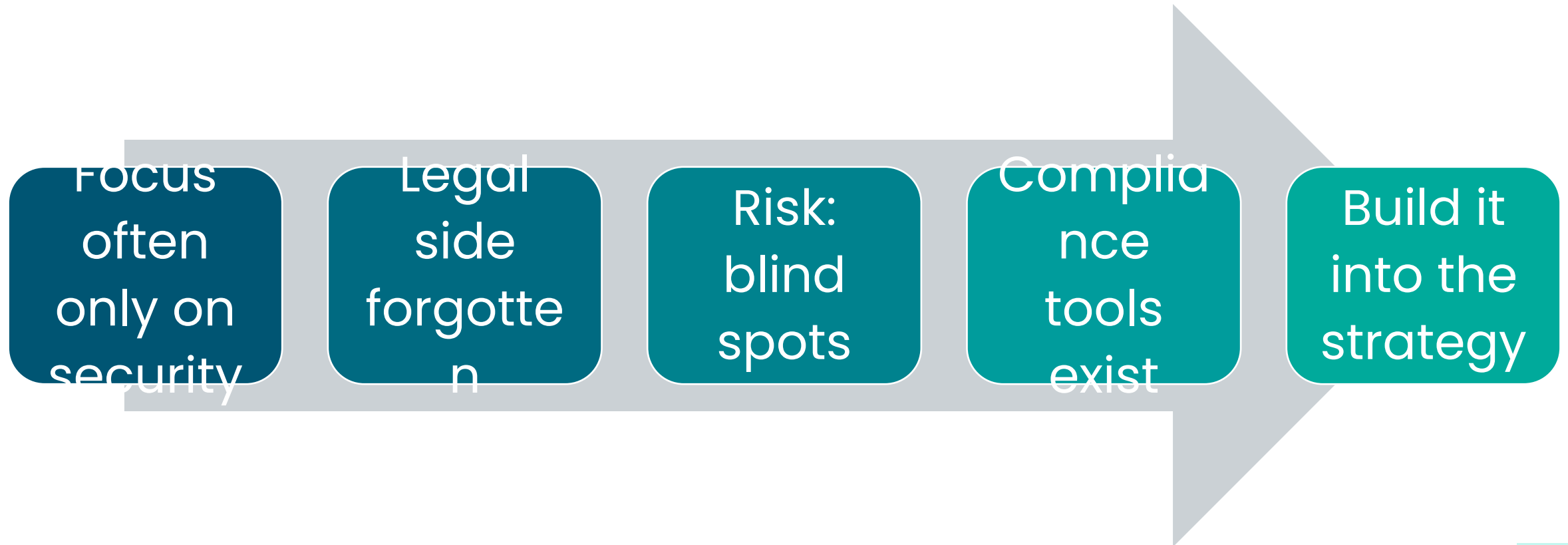
## rCloud/YrCloud a Souvereign Cloud



# Sovereign Cloud



# Cloud Strategy: More than Security





# Sovereign Cloud: Legal Risk Answer?

Fits local legislation

Data stays local, no 3rd-party access

You control access, usage, storage

Ensures sovereignty & security

Like a fort around your data

An abstract graphic on the left side of the slide, featuring a dark blue background with a complex network of white lines and dots, resembling a molecular structure or a data network. The lines connect various points, creating a web-like pattern that extends across the left half of the slide.

# Legal Key 1: GDPR

- EU cloud = sovereignty & control
- GDPR: rules for personal data
- Applies also to non-EU firms with EU data
- Transfers outside EEA only if:
  - Adequacy decision
  - Impact assessment
  - DPA in place
- US–EU framework exists, but uncertain
- “Transfer” = also backups, remote support



## Legal Key 2: Sector Rules

- Each sector = own data rules
- Healthcare: hospital manages records
- Telecom: some data must stay in EU
- Employment: social docs must stay in Belgium
- Key: know your sector rules before cloud strategy





## Legal Key 3: Reach of Foreign Laws

- Data in EU  $\neq$  always safe
- US CLOUD Act: access to data abroad
- Applies to US firms + EU subsidiaries
- Risks: weak contest rights, gag orders
- Response: look at EU cloud alternatives

# Multi-factor Risk Assessment

Start with type of data (personal vs. non-personal)

Legal: GDPR, sector rules, foreign laws

Security: encryption, anonymization, pseudonymization

Commercial: features, tools, SLAs

Add interoperability & standards

Strategy = combine legal + technical + business → protect your data fortress

# rCloud: A Proven Sovereign Datacenter

Full  
control:  
meets  
legal &  
sector  
rules

Data  
stays  
100%  
within  
borders

Local  
ops:  
certified  
teams in  
BE & PT

Compliance:  
GDPR +  
sector-  
specific

Owned &  
run by  
Inetum

Security  
by  
design,  
sovereign  
standards



# Wrap-Up: Build Your Data Fortress

**Security  
alone isn't  
enough**

**Law, sector  
rules &  
foreign  
reach  
matter**

**Combine  
legal +  
technical +  
business  
layers**

**Sovereign  
cloud  
datacenter  
= proven  
fortress**



# rcloud





# OVERVIEW

- **INFRASTRUCTURE 'AS-A-SERVICE'**
  - **Logically shielded private cloud in a shared infrastructure**
    - From firewall to back-up
    - Dedicated is also possible
  - **Cloud Management Platform**
    - Manage your own machines
  - **In a Managed Services context**
    - Infrastructure management of the platform is included
      - Lifecycle management
      - Patching
      - Updates
      - Upgrades



- **HIGH-QUALITY HOSTING PLATFORM**

- **Pay-per-use services**
  - Always the perfect size — scaling with your business
  - Monthly invoicing after consumption
- **Service catalog**
  - based on building blocks
  - Tierings and Flavours
- **2 equal datacenters**
  - in active-active setup
  - Local (1 DC) or Geo (2DC's) redundant

- **HOUSING**

- **Digital Realty** (Zaventem) & **LCL** (Erembodegem)

- Cabinets, Cages or Private rooms
- Physical Security
- Power
- Climate
- Fire and Water protection
- +100 connectivity providers



- **ONLY THE BEST IS GOOD ENOUGH**

- **Enterprise-Grade Infrastructure**

- Enterprise suppliers
- Best-in-class hardware and software
- Scalable, secure, and reliable
- Designed for future growth

**HPE**   
**GreenLake**





- **SERVICE CATALOG**

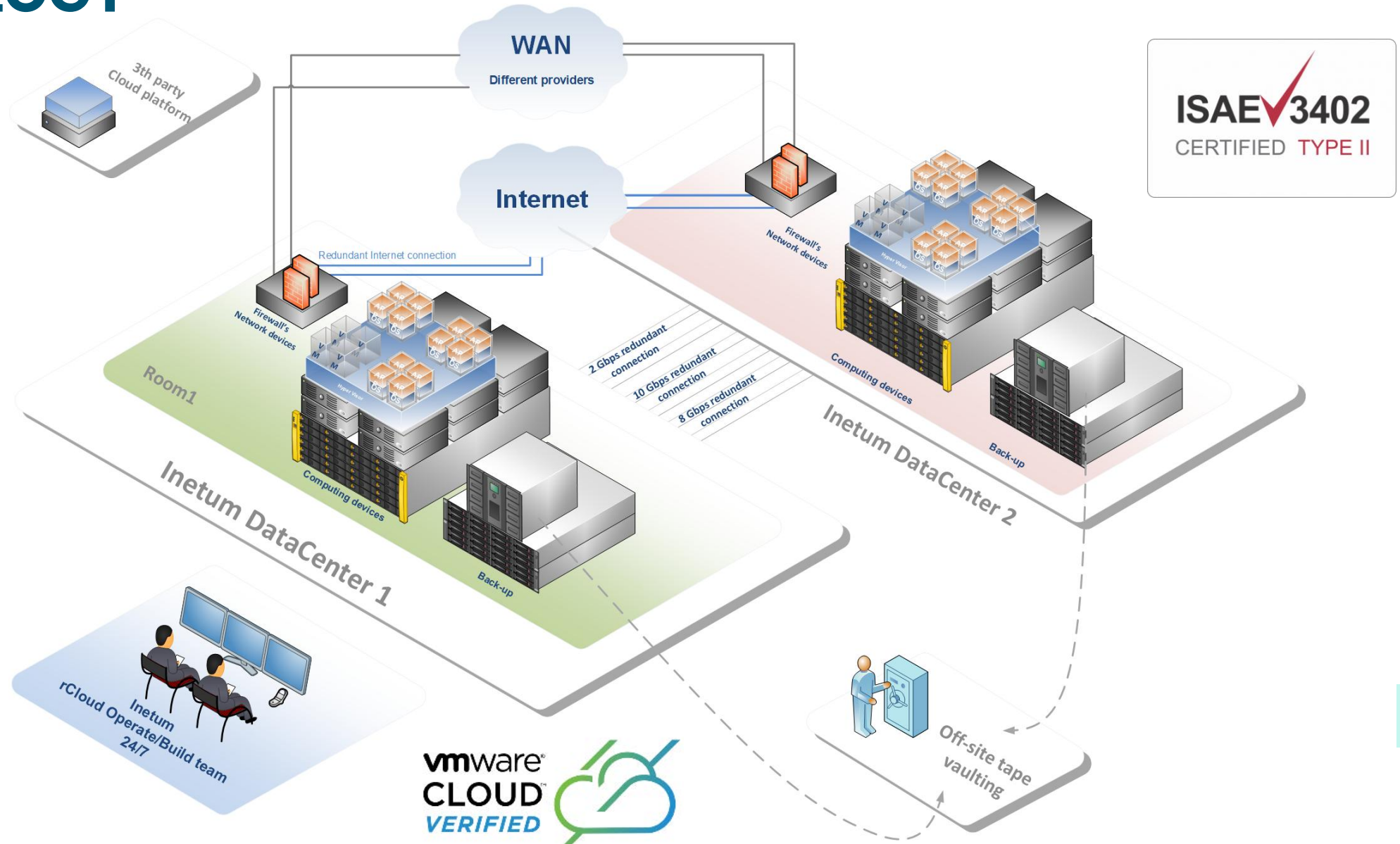
- **Standardized building blocks**

- Virtual Servers
- Storage
- Backup
- Firewall
- Internet Connectivity
- Licensing

- **Different tiers and flavours**

- Geo-redundancy (2 datacenters)
- Local-redundancy (1 datacenter)
- Platinum
- Silver
- Gold

# TOPOLOGY





# INNOVATION

- **RED HAT Openshift containerplatform**
- **S3 Object Storage**
- **Encrypted Storage** (Hypervisor)
- **New compute models**
  - Private Cloud
  - Virtual Datacenter
  - On demand VM's
- **New backup flavour**
  - Palladium Backup (1Y retention on disk)







# Yrcloud

## • **CHARACTERISTICS**

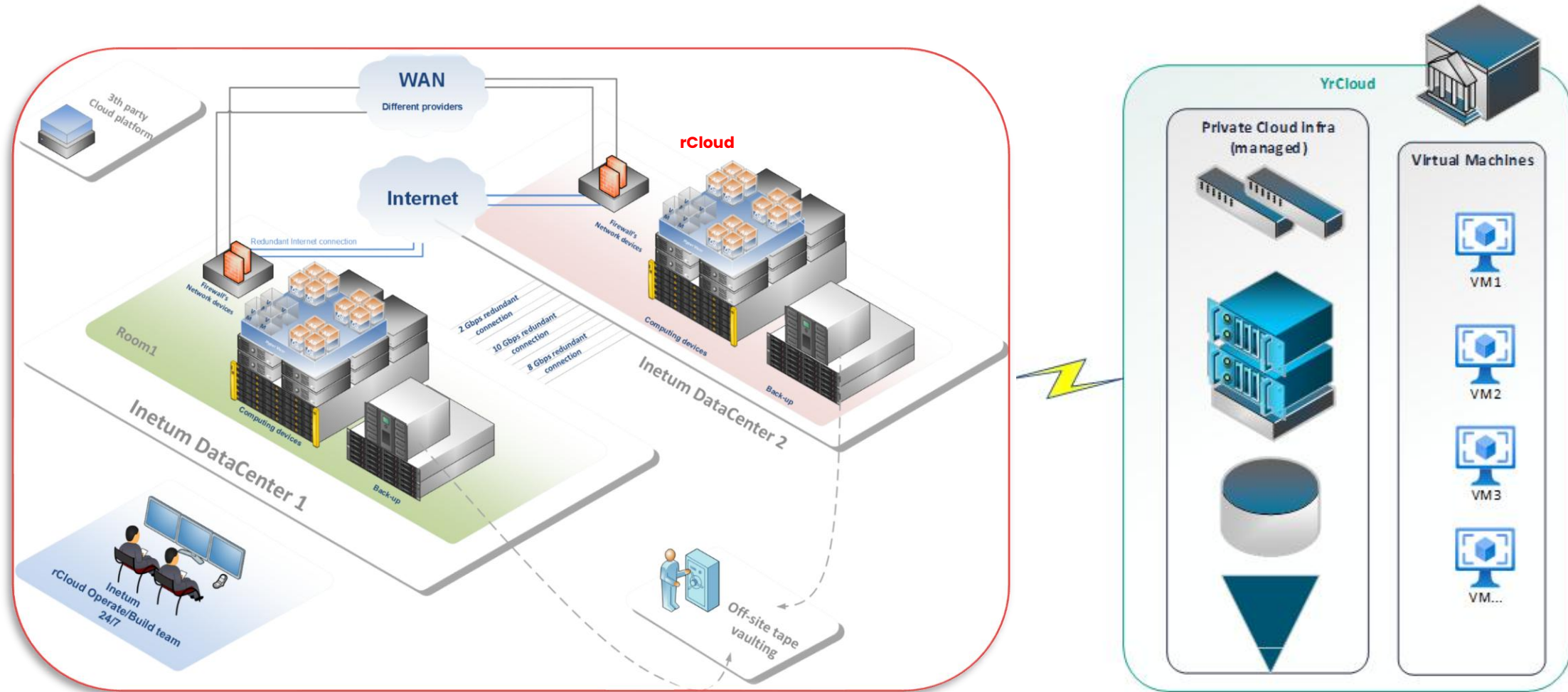
- Based on the rCloud ecosystem
- Extension of our proven rCloud platform
- On premise private cloud
- Fully or self-managed
- Capacity management and lifecycle management
- Always up to date
- High flexibility
- Flexible costs: based on consumption
- Scalable right-sized infrastructure, every time

## • **VALUE**

- All the benefits of on-premises infrastructure
- Low latency
- Local data storage and processing
- Local collaboration between systems
- Time savings for your in-house IT team
- Stronger focus on innovation
- Less need for hard-to-find infrastructure staff.



# TOPOLOGY





**inetum.**

inetum.com



# HPE

## ON TOUR 2025

### Sunset sessions



  
Hewlett Packard  
Enterprise

| intel<sup>®</sup>